



**WE HELP
TO MAKE
THE LIFE OF
ANIMALS
BETTER**



VETERINARY MEDICINES
PRODUCT CATALOG 2022
WWW.FARMETOMALAYSIA.COM

Why Farmeto ?

Animals, like humans, are prone to illness and need medicine to treat and prevent disease all animals benefit from today's veterinary medicines. Better animal health is an important part of animal welfare.

The time, care, and investment put into the research and development of animal medicines ensure a steady stream of new and innovative products that improve the health and well-being of all of these animals.

Farmeto members, provide the pharmaceutical, biological and chemical products that keep animals healthy. Farmeto members conduct ongoing research, production, and distribution of animal medicines

Animal medicines are a critical link in the food safety chain, as they represent needed tools for farmers and veterinarians to help to produce healthy animals and to improve the availability of affordable protein. Like human medicines, animal medicines undergo extensive trials and testing



WE WERE MADE FOR CARING THE ANIMAL



MORE THAN
70
PRODUCTS

**OUR COMPANY IS CONSIDERED
THE LEADING VETERINARY COMPANY
AROUND THE WORLD
PHARMACEUTICALS COMPANY,
NOT ONLY IN SALES BUT ALSO IN INNOVATION**

FARMETO

PROVIDE

PRODUCTS HELP TO MAKE SURE LIVESTOCK REMAIN HEALTHY.

FARMETO SUPPLYING VETERINARY PRODUCTS

INCLUDING :

- VETERINARY MEDICINES,
- NUTRITIONAL PRODUCTS
- SUPPLEMENTS.

FARMETO OPERATES THREE PRODUCTION LINES, NAMELY:

- INJECTABLES LINES,
- ORAL LIQUIDS LINES
- AND WATER-SOLUBLE POWDERS LINES.

FARMETO HAS ATTAINED THIS HIGH QUALITY STANDARD BY CONTINUOUSLY RESEARCHING AND DEVELOPING NEW PRODUCTS. BECAUSE ONLY BY IMPROVING OUR PRODUCT LINE WE CAN SAFEGUARD THE HEALTH OF ANIMALS IN THE FUTURE.

4
INJECTABLE



3
FEED ADDITIVE



2
SUPPLEMENT



1
ANTIBIOTIC



FARMETO™

VETERINARY MEDICINES

WWW.FARMETOMALAYSIA.COM

WE PROVIDE LIQUID VETERINARY PRODUCTS EASE TO USE FOR ENHANCE ANIMALS HEALTH AND CURE VARIOUS INFECTIONS. LIQUID SOLUTIONS WERE PRODUCED IN ACCORDANCE WITH GMP GUIDELINES.



FATRIL 10

ANTIBIOTIC

Each 1ml contains:
Enrofloxacin 100 mg

INDICATIONS

FATRIL10 is a broad-spectrum antibiotic, indicated for the Prevention and treatment of Respiratory, Enteric and Urinary tract infections caused by gram positive and gram negative bacteria (Staphylococci, Streptococci, E.coli, Haemophilus, Pasteurella, Klebsiella & salmonella) as well as Mycoplasma (CRD), Rickettsia and Chlamydia in large animals and rabbits .

DOSAGE

Large animals & Rabbits:

For oral administration:

Calves, goats and sheep:

Twice daily 10 ml per 75 - 150 kg body weight for 3 - 5 days.

Poultry: 1 litre per 1500 - 2000 litres of drinking water for 3 - 5 days.

Swine: 1 litre per 1000 - 3000 litres of drinking water for 3 - 5 days.

WITHDRAWAL TIME

Meat: 7 days.



Liquid Antibiotic

FOSFO 20

ANTIBIOTIC

Each 1ml contains:

Fosfomycin (As Sodium) 200 mg

INDICATIONS

For the treatment of bacterial infections of poultry susceptible to the action of fosfomycin. Infectious coryza, fowl cholera, colibacillosis, ORT, CRD, staphylococcal infections, fowl typhoid, salmonellosis in broilers, layers , breeders, turkey, ducks and guinea fowl from one day of age .

DOSAGE

Poultry :

100 ml per 200 liter of drinking water for 3-5 consecutive days Better to administer the total amount of drug for one day in the drinking water that the birds will consume in the first 4-6 hours, followed by fresh water for the rest of the day.

WARNINGS

Prepare a fresh stock solution daily High mineral salts in the drinking water, above 1000 ppm , may interfere with the solubility .

WITHDRAWAL TIME

Meat and eggs from treated animals shouldn't be consumed during treatment and within 5 days from the last treatment.



8



Liquid Antibiotic

TILMICO-25

ANTIBIOTIC

Each 1ml contains:

Tilmicosin (as Tilmicosin phosphate)

250 mg

INDICATIONS

Tilmico25 is indicated for the control and treatment of respiratory infections associated with microorganisms susceptible to tilmicosin, such as: Mycoplasma spp., Pasteurella multocida, Mannheimia haemolytica, Actinomyces pyogenes and Actinobacillus pleuropneumoniae in calves and pigs. Tilmi 25% Oral can be used for the treatment of infections in poultry and turkeys caused by Mycoplasma gallisepticum (CRD), Mycoplasma synoviae (arthritis/synovitis), Mycoplasma meleagridis (in turkeys) and by Clostridium perfringens (necrotic enteritis).

DOSAGE

Chickens and Turkeys (except hens producing eggs for human consumption): To be included in the drinking water at a daily dose of 15-20 mg Tilmicosin / kg bodyweight in chickens and 10-27 mg Tilmicosin / kg bodyweight in turkeys for 3 days, which may achieved by the inclusion of 75 mg Tilmicosin per liter (30 ml TILMICO-25 / 100 liters of drinking water).

WITHDRAWAL TIME

-Chickens (Meat): 12 days.

-Turkeys (Meat): 19 days.

-Not authorised for use in laying birds producing eggs for human consumption. Do not use within 14 days of onset of the laying.



Liquid Antibiotic

9

FLOR-10

ANTIBIOTIC

Each 1ml contains:
Florfenicol 100 mg

INDICATIONS

FLOR-10 is a broad spectrum antibiotic used for the treatment of enteric and respiratory infections in bovine and poultry, such as: Colibacillary enteritis, respiratory colibacillosis, colisepticemia, complications with E.coli infectious diseases (Coryza, CRD).

DOSAGE

Administered Via oral route
100 ml / 100-200 liters of drinking water for 3-5 days
10 ml per 50 Kg bodyweight in bovine and poultry

CONTRAINDICATIONS

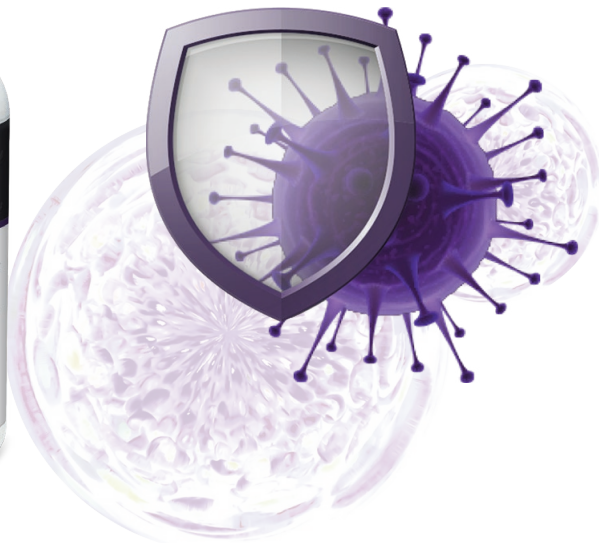
Do not administer together with penicillins.
Do not use in laying hens producing eggs for human consumption

WITHDRAWAL TIME

Meat: 5 days.



10



Liquid Antibiotic

FLOR-20

ANTIBIOTIC

Each 1ml contains:
Florfenicol 200 mg

INDICATIONS

FLOR-20 is a broad spectrum antibiotic used for the treatment of enteric and respiratory infections in bovine and poultry, such as: Colibacillary enteritis, respiratory colibacillosis, colisepticemia, complications with E.coli infectious diseases (Coryza, CRD).

DOSAGE

Administered Via oral route
50 ml / 100-200 liters of drinking water for 3-5 days
10 ml per 100 Kg bodyweight in bovine and poultry

CONTRAINDICATIONS

Do not administer together with penicillins.
Do not use in laying hens producing eggs for human consumption

WITHDRAWAL TIME

Meat: 5 days.



11



Liquid Antibiotic

ENROSTIN

ANTIBIOTIC

Each 1ml contains:

Enrofloxacin 100mg

Colistin Sulphate 500.000IU

INDICATIONS

ENROSTIN solution is indicated for gastrointestinal, respiratory and urinary tract infections caused by enrofloxacin and colistin sensitive micro-organisms like Campylobacter, Escherichia coli, Haemophilus, Mycoplasma, Pasteurella and Salmonella species. Clinically ENROSTIN is effective against Colibacillosis, Infectious Coryza, Chronic Respiratory Disease (CRD), Fowl Cholera, Fowl Typhoid, Lameness and early chick mortality.

DOSAGE

Administer via drinking water.

Poultry: 100ml / 100 - 200 liters of drinking water for 3-5 days.

In case of salmonellosis and respiratory infections, continue treatment for at least 5-7 days.

WITHDRAWAL TIME

Meat: 7 days.



12



Liquid Antibiotic

CIPRO-10

ANTIBIOTIC

Each 1ml contains:

Ciprofloxacin 100 mg

INDICATIONS

Cipro-10 is a broad spectrum antibiotic indicated for the treatment of different infectious diseases of poultry, ruminants and rabbits:

Colibacillosis, CRD and Mycoplasma, Coryza, Omphalitis & yolk sac infections, Fowl Cholera, Salmonellosis, Pasteurellosis, Enterotoxemia, Enteritis and diarrhea.

DOSAGE

Treatment :

Poultry : 100 ml /200 liters of drinking water for 3-5 days .

Ruminant & Rabbits :3-5 mg active ingredients / kg bodyweight in drinking water for 3-5 days

Prevention :

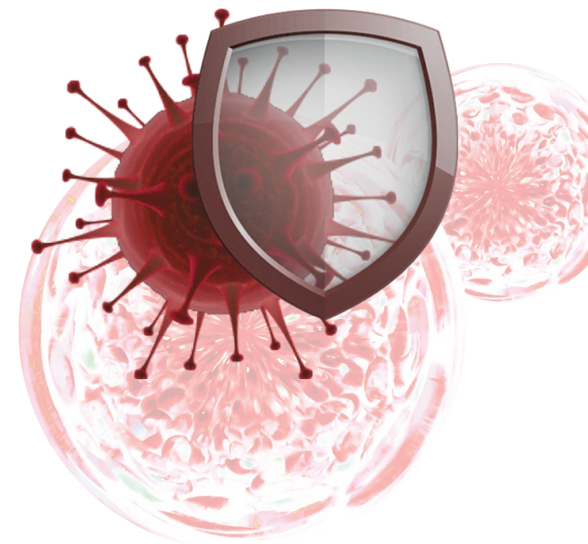
Half the doses for the same period .

WITHDRAWAL TIME

Animal and poultry products should not be used during treatment and within one week from the last treatment.

REMARKS

Not to be used in water medicated with mineral salts.



Liquid Antibiotic



13

TAYLOXIN-PLUS

ANTIBIOTIC

Each 1ml contains:

Tylosin Tartrate 150 mg

Enrofloxacin 100 mg

Colistin Sulphate 500.000 IU

Vitamin C 80 mg

DESCRIPTION

Tylosin belongs to macrolides antibiotic with bacteriostatic action against (mainly Gram-positive) bacteria like Campylobacter, Mycoplasma, Pasteurella, Staphylococcus, Streptococcus and Treponema Enrofloxacin belongs to the group of fluoroquinolones and acts bactericidal against both Gram-positive and Gram-negative bacteria, Colistin sulfate, a cationic polypeptide from the polymyxin family, has been shown to be an extremely potent antibiotic that is effective against most gram-negative Bacilli. a and gram-negative bacteria, It is also active against Mycoplasmas, Vitamin C helps the growth of the tissues in all the parts of the body and repair the tissue, It affects the overall healing capacity of the body, it is also an important anti-oxidant that stops the harm of the body.

INDICATIONS

Poultry: Mycoplasmas, coryza, E-coli infections, bronchitis and CRD.

Ruminants: bronchitis, Pneumonia, uro-genital infection and foot rot

DOSAGE

Poultry: 1 ml per 1 liter of drinking water for 3 days

Cattle: 5 ml per 50 kg body weight for 3 days

Sheep: 1 ml per 10 kg body weight for 3 days

WITHDRAWAL TIME

Poultry: Meat: 5 days Eggs: 5 days

Ruminants: Meat: 21 days Milk: 5 days



14



Liquid Antibiotic

FATRIM

ANTIBIOTIC

Each 1ml contains:

Sulfadiazine 400 mg.

Trimethoprim 80 mg.

Excipients ad1 ml.

INDICATIONS

Fatrim recommended for bacterial infections such as gastrointestinal and respiratory infections caused by trimethoprim and sulfadiazine sensitive micro-organisms, like E. coli, Haemophilus, Pasteurella, Salmonella, Staphylococcus and Streptococcus spp. in calves, sheep, goats, and poultry.

DOSAGE

Poultry : 1 litre per 1500 - 2500 litres of drinking water for 4 - 7 days.

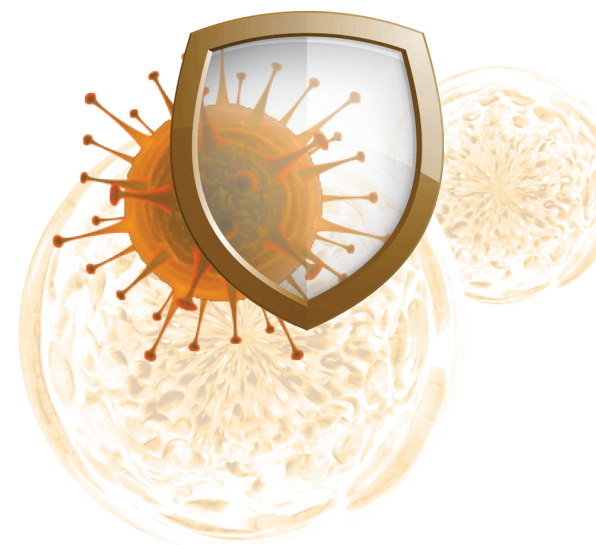
Calves, goats and sheep : Twice daily 5 ml per 100 kg body weight for 4 - 7 days.

Note: for pre-ruminant calves, lambs and kids only. Shake well before use.

WITHDRAWAL TIME

meat: Calves, sheep, and goats : 8 days.

Poultry : 5 days.



Liquid Antibiotic



15

FADOX

ANTIBIOTIC

Each 1ml contains:

Doxycycline (hyclate)	100 mg	Bromhexine HCl	10 mg
Excipient q.s.	1 ml		

INDICATIONS

FADOX is effective against respiratory infections caused by micro-organisms sensitive to doxycycline, like E. coli, Salmonella, Mycoplasma, Pasteurella, Bordetella, Streptococcus, Campylobacter and Haemophilus spp. in calves, poultry and pigs. Bromhexine HCl as an aid to the treatment of respiratory disease in cattle, pigs, dogs and cats where mucus is a complicating factor
Poultry: Mycoplasma, coryza, E-coli infections, bronchitis and CRD.
Ruminants: bronchitis, Pneumonia.

DOSAGE

Poultry: 1 ml per 1 liter of drinking water for 3 days
Cattle: 5 ml per 50 kg body weight for 3 days
Sheep: 1 ml per 10 kg body weight for 3 days

WITHDRAWAL TIME

Poultry: Meat: 5 days Eggs: 5 days
Ruminants: Meat: 21 days Milk: 5 days



16



Liquid Antibiotic

LEVOXIN

ANTIBIOTIC

Each 1ml contains:

Levofloxacin	100 mg
Bromhexine	7.5 mg

INDICATIONS

Levoxin recommended for respiratory infections like CRD & CCRD use for control and treatment of severe respiratory disease. As well as Bacterial infections like Infectious Coryza, Fowl Cholera, Necrotic Enteritis, Colibacillosis, Salmonellosis, Gangrenous Dermatitis & other mixed nonspecific bacterial infections. Also for Secondary bacterial complications after viral infections, for the antibacterial treatment before bacterial vaccination and use when condition where there is a lot thick mucus in the airways

DOSAGE

Poultry: 1 L /1000 Litters drinking water 3-5 days depending on the severity of infection
Or, as recommended by registered Veterinary Practitioner

WITHDRAWAL TIME

Chicken: 28 days
Egg: 7 days



Liquid Antibiotic



17

OXYTET-500

ANTIBIOTIC

Each 1 gm contains:
Oxytetracycline hydrochloride 500 mg.

INDICATIONS

oxytet-500 is recommended for bacterial infections such as gastrointestinal and respiratory infections caused by oxytetracycline sensitive bacteria like Bordetella, Bacillus, Corynebacterium, Campylobacter, E. coli, Haemophilus, Pasteurella, Salmonella, Staphylococcus and Streptococcus spp. and Mycoplasma, Rickettsia and Chlamydia spp. in calves, goats, poultry, and sheep.

DOSAGE

Calves, goats and sheep: Twice daily 1 g per 50 - 100 kg body weight for 3 - 5 days.
Poultry and swine : 1 kg per 2000 litres of drinking water for 3 - 5 days.

WITHDRAWAL TIME

Meat:
Calves, goats, sheep and swine : 8 days.
Poultry : 6 days.



18



Powder Antibiotic

AMOSIN-320

ANTIBIOTIC

Each 1 gm contains:
Amoxicillin Trihydrate 200 mg
Erythromycin 120 mg

INDICATIONS

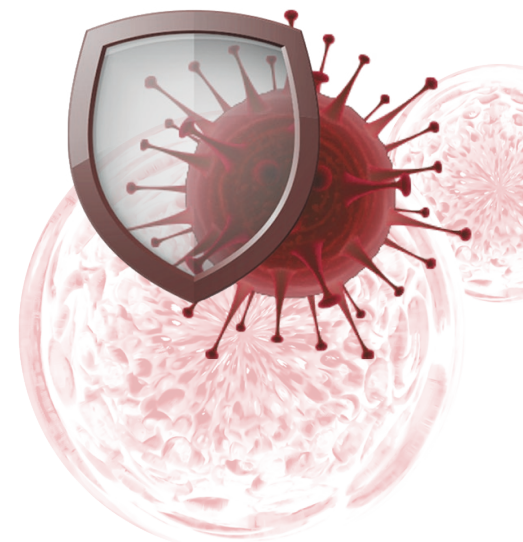
Amosin-320 is a combination of Amoxicillin & Erythromycin create to prevent and therapy for diseases caused by many germs. Amoxicillin is based on inhibition of cell wall synthesis. Erythromycin can be used for the treatment of pneumonias. It is the drug of choice for a Legionella pneumonia and a good alternative to tetracyclines for chlamydial infections and mycoplasmas. Pneumococcal pneumonias normally also respond well to erythromycin, Haemophilus influenzae, on the other hand, is often resistant. Erythromycin serves in the prophylaxis and treatment of diphtheria carriers.

DOSAGE

Poultry :
500 gm per 1000 litres of drinking water for 5 - 7 days.

WITHDRAWAL TIME

meat: 7 days.



Powder Antibiotic



19

OTRICOL-400

ANTIBIOTIC

EACH 1 gm CONTAINS:

Oxytetracycline hydrochloride — 250mg
Trimethoprim — 120 mg
Colistin sulphate — 600 000 IU

INDICATIONS

otricol-400 is recommended for bacterial infections and Indicated for poultry (chicken-broilers, , turkeys,geese, ducks): mycoplasmosis, colibacillosis, pasteurellosis, diseases of respiratory system. It is indicated for treatment of diseases caused by Gram-positive and Gram-negative agents: - calves and lambs (aged up to six weeks): enteritis, diseases of respiratory system.

DOSAGE

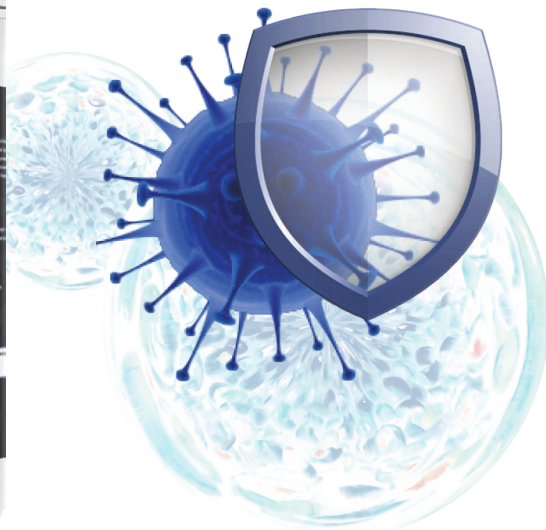
Poultry: 1 kg per 1000 - 2000 litres of drinking water for 3 - 5 days.
Calves, goats and sheep: Twice daily 5 g per 100 kg body weight for 3 - 5 days.

WITHDRAWAL TIME

Meat and offal Poultry: 7 days.
Cattle (Pre-ruminating calves): 7 days.



20



Powder Antibiotic

ERYTHROSIN-200

ANTIBIOTIC

EACH 1 gm CONTAINS:

Erythromycin thiocyanate 100 mg
Tylosin tartrate 100 mg

INDICATIONS

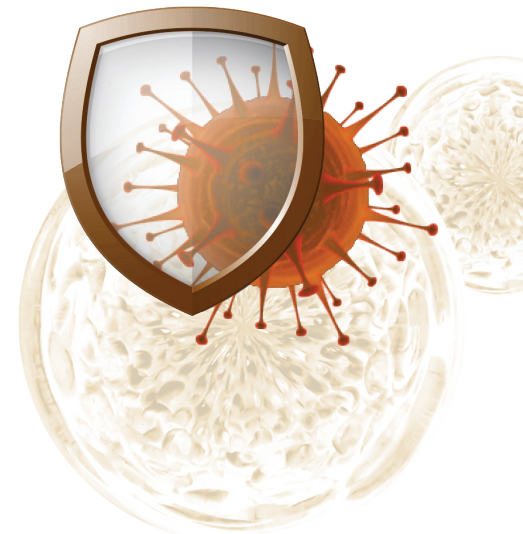
Erythrosin-200 Indications is recommended to helps the control and treatment of gastrointestinal and respiratory infections (CRD)caused by microorganism sensitive to tylosin and/or erythromycin like Bordetella,Campylobacter, Chlamydia, E. coli, Klebsiella, Haemophilus, Mycoplasma, Pasteurella,Rickettsia, Salmonella, Staphylococcus and Streptococcus spp. in animals.

DOSAGE

Poultry: 1 kg per 1000 - 2000 litres of drinking water for 3 - 5 days.
Calves, goats and sheep: Twice daily 5 g per 100 kg body weight for 3 - 5 days.

WITHDRAWAL TIME

Meat and offal Poultry : 7 days.
Cattle (Pre-ruminating calves): 7 days.



Powder Antibiotic



21

FARMETASIN-100%

ANTIBIOTIC

EACH 1 gm CONTAINS:
Tylosin tartrate 1000 mg

INDICATIONS

Farmetasin-100% is recommended to use for control and treatment of bacterial infections such as gastrointestinal and respiratory infections caused by tylosin sensitive micro-organisms like Campylobacter, Mycoplasma, Pasteurella, Staphylococcus, Streptococcus and Treponema spp. in calves, goats, poultry, and sheep.

DOSAGE

Poultry: 1 kg per 1000 - 2000 litres of drinking water for 3 - 5 days.

Calves, goats and sheep: Twice daily 5 g per 100 kg body weight for 3 - 5 days.

WITHDRAWAL TIME

Meat and offal Poultry and Pigs: 7 days.

Cattle (Pre-ruminating calves): 7 days.



22



Powder Antibiotic

OXYSIN-600

ANTIBIOTIC

EACH 1 gm CONTAINS:
Tylosin tartrate 200 mg
Oxytetracycline hydrochloride 200mg
Ascorbic acid 200 mg

INDICATIONS

oxysin-600 is recommended for bacterial infections and treatment of young and adult poultry (chickens, turkeys, ducks, geese) suffering from the diseases of the gastrointestinal tract and respiratory complications of bacterial diseases caused by microorganisms that are sensitive to oxytetracycline and tylosin.

DOSAGE

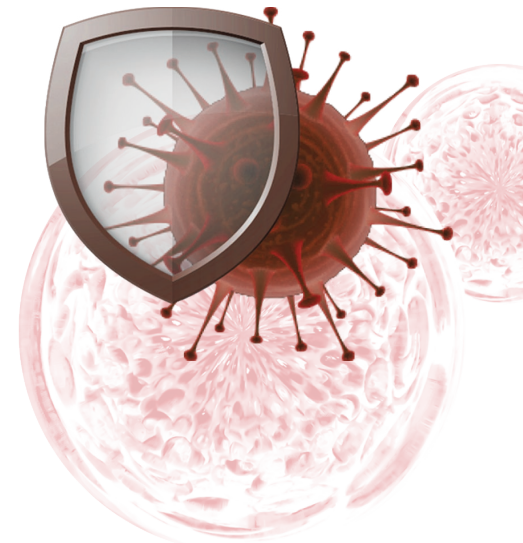
Poultry: 1 kg per 1000 - 2000 litres of drinking water for 5 - 7 days.

Calves, sheep and goats: Preventive: 1 gm per 50 Kg body weight through drinking water for 21 days

WITHDRAWAL TIME

Meat and offal Poultry: 7 days.

Cattle (Pre-ruminating calves): 7 days.



Powder Antibiotic



23

NEOMYCIN-50

ANTIBIOTIC

EACH 1 gm CONTAINS:
Neomycin Sulphate 500mg.

INDICATIONS

Recommended for the treatment of enteric infections caused by gram negative bacteria such as: E.coli, Salmonella, Klebsiella, Enterobacteria, Proteus and Actinobacter spp that cause gastrointestinal infections .

DOSAGE

Poultry : 500g / 1000 Liters of drinking water for 3 - 5 days .

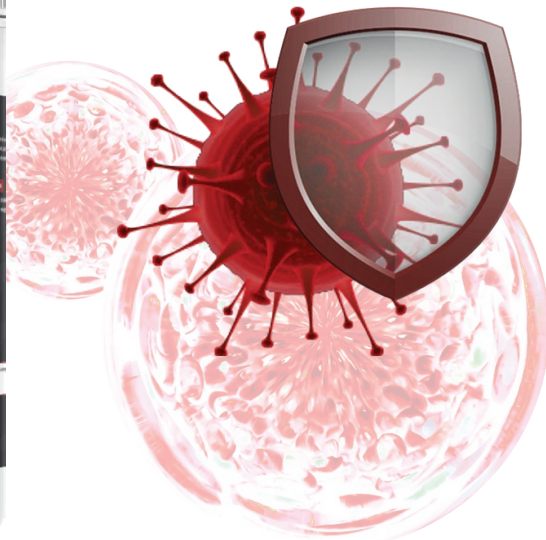
Calves : 50-100 mg / Kg body weight added to drinking water or to feed 4 - 6 days.

WITHDRAWAL TIME

Meat : 7 days



24



Powder Antibiotic

LENCOSPECT 360

ANTIBIOTIC

EACH 1 gm CONTAINS:
Spectinomycin 240 mg.
Lincomycin base 120 mg.

INDICATIONS

Gastrointestinal and respiratory infections caused by micro-organisms sensitive to spectinomycin and lincomycin, such as Campylobacter, E. coli, Mycoplasma, Salmonella, Staphylococcus, Streptococcus and Treponema spp. in poultry, most notably:

Poultry : Prevention and treatment of chronic respiratory disease (CRD) associated with mycoplasma and coliform infections of growing poultry susceptible to the action of the antibiotic combination.

DOSAGE

For oral administration:

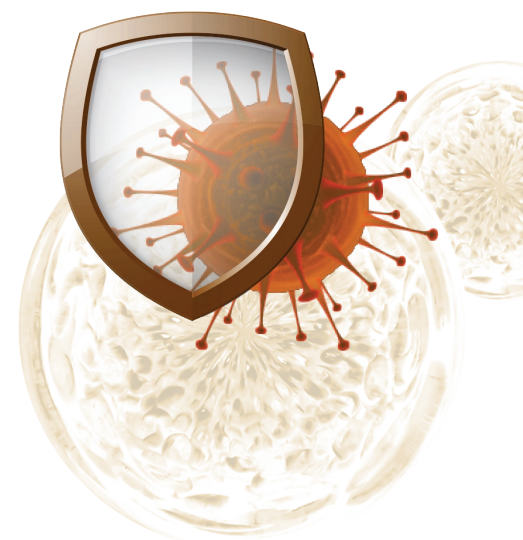
Poultry:

100 g per 200 litres of drinking water for 5 - 7 days..

Note: Do not use in poultry producing eggs for human consumption.

WITHDRAWAL TIME

Meat : 5 days



Powder Antibiotic



25

AMOXY-50

ANTIBIOTIC

EACH 1 gm CONTAINS:
Amoxicillin Trihydrate 500 mg

INDICATIONS

Amoxicillin is a semi-synthetic penicillin with a broad-spectrum bactericidal activity against a large number of gram-positive micro-organisms (Staphylococcus Streptococcus.) and gram-negative The bactericidal action is due to inhibition of cell wall synthesis.

Amoxicillin is mainly excreted in urine.

A major part can also be excreted in bile micro-organisms (E. coli, Haemophilus, Pasteurella, Salmonella , Kleibsella)

DOSAGE

Poultry: 1000 gm per 2000 litres of drinking water for 5 - 7 days.

WITHDRAWAL TIME

Meat : 2 days



26

Powder Antibiotic

RESPOFAR

ANTIBIOTIC

EACH 1 gm CONTAINS:
Tylosin Tartrate 200mg
Doxycycline HCl 200mg
Colistine Sulphate 50MIU
Phenylbutazone 15mg
Bromhexine 5mg

INDICATIONS

RESPOFAR Powder is indicated for the treatment and prevention of respiratory tract infections in poultry like mycoplasmosis, chronic respiratory disease (CRD), infectious synovitis, infectious coryza, bronchopneumonia and gastrointestinal infections like colibacillosis, Fowl typhoid, Fowl cholera and borreliosis (spirochetosis) in chickens.

DOSAGE

Poultry: 1000 gm per 2000 litres of drinking water for 5 - 7 days.

WITHDRAWAL TIME

Meat : 7 days



27

Powder Antibiotic

AMPI-50

ANTIBIOTIC

EACH 1 gm CONTAINS:
Ampicillin Trihydrate 500 mg

INDICATIONS

Ampicillin is a semi-synthetic penicillin with a broad-spectrum bactericidal activity against a large number of gram-positive micro-organisms (Staphylococcus Streptococcus.) and gram-negative micro-organisms (E. coli, Haemophilus, Pasteurella, Salmonella, Kleibsell))
The bactericidal action is due to inhibition of cell wall synthesis.
Amoxycillin is mainly excreted in urine.
A major part can also be excreted in bile.

DOSAGE

Poultry: 1000 gm per 2000 litres of drinking water for 5 - 7 days.

WITHDRAWAL TIME

Meat : 2 days



28

Powder Antibiotic

OGMANTIN

ANTIBIOTIC

EACH 1 gm CONTAINS:
Amoxicillin (as Amoxicillin Trihydrate) 250mg,
Clavulanic Acid (as Potassium Clavulanate) 40mg

INDICATIONS

OGMANTIN powder is effective against broad spectrum of aerobic and anaerobic Gram-positive and Gram-negative organisms.
Gram Positive Bacteria: Streptococci species, Staphylococci species, Clostridia species, Actinomyces species and some Bacillus anthracis Gram Negative Bacteria: Escherichia coli, Salmonella species, Campylobacter species, Klebsella species and Pasteurella multocida.
Clinically, OGMANTIN powder is effective against wide range of infections like Fowl Typhoid, Fowl Cholera, Pullorum Disease, Necrotic Enteritis, Peritonitis, Salpingitis, delayed absorption of Egg Yolk, Endocarditis, Omphalitis, Lameness due to infected Hock and Stifle joint, Bumble Foot, Actinomycosis, Cellulitis, Decreased Hatching, Embryo and early Chick Mortality.

DOSAGE

Poultry: 1000 gm per 2000 litres of drinking water for 5 - 7 days.

WITHDRAWAL TIME

Meat : 14 days

Egg : 4 days



Powder Antibiotic



29

SPIRASTIN

ANTIBIOTIC

EACH 1 gm CONTAINS:
 Spiramycin Adipate MS 25mg
 Colistine Sulphate 50MIU

INDICATIONS

SPIRASTIN powder is indicated for the treatment of respiratory and gastrointestinal tract diseases caused by staphylococcus spp., streptococcus spp., mycoplasma, pasteurella, Clostridium, escherichia coli and salmonella spp.

DOSAGE

Poultry: 1000 gm per 2000 litres of drinking water for 5 - 7 days.

WITHDRAWAL TIME

Meat : 8 days
 Egg : 3 days



30

Powder Antibiotic

KITASAMOX

ANTIBIOTIC

EACH 1 gm CONTAINS:
 Kitasamycin Tartrate 250mg
 Amoxicillin (as Amoxicillin Trihydrate) 200mg

INDICATIONS

Used for the treatment of infectious disease caused by gram-positive bacteria and mycoplasma, indicated for the treatment and prevention of respiratory tract infections in poultry like mycoplasmosis, chronic respiratory disease (CRD),

Gram-Positive Bacteria: Streptococci species, Staphylococci species, Clostridia species, Actinomyces species, and some Bacillus anthracis

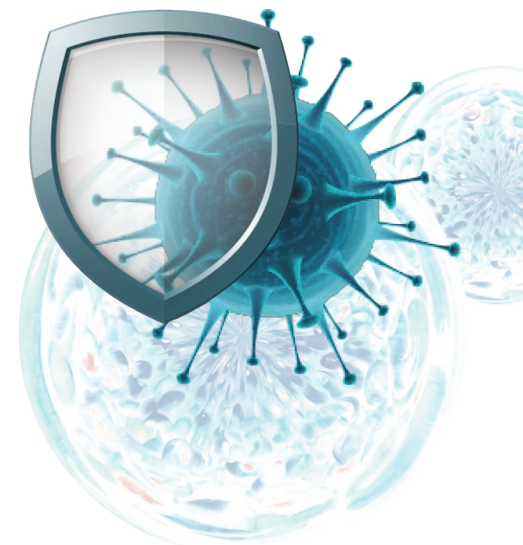
Gram-Negative Bacteria: Escherichia coli, Salmonella species, Campylobacter species, Klebsiella species, and Pasteurella multocida

DOSAGE

Poultry: 1000 gm per 2000 litres of drinking water for 5 - 7 days.

WITHDRAWAL TIME

Meat : 4 days
 Egg : 2 days



Powder Antibiotic



31

GENTADOX

ANTIBIOTIC

EACH 1 gm CONTAINS:

Doxycycline Hydrochloride 100 mg
Gentamicin (As sulphate) 160 mg

INDICATIONS

Used for Gastrointestinal and respiratory infections caused by micro-organisms sensitive to doxycycline and/or gentamicin caused by gram-positive and gram-negative bacteria, that cause Pullorum disease, CRD complex and Colibacillosis in poultry and in the treatment of infections caused by Campylobacter, Chlamydia, E. coli, Klebsiella, Haemophilus, Mycoplasma, Pasteurella, Rickettsia, Salmonella, Staphylococcus and Streptococcus spp

DOSAGE

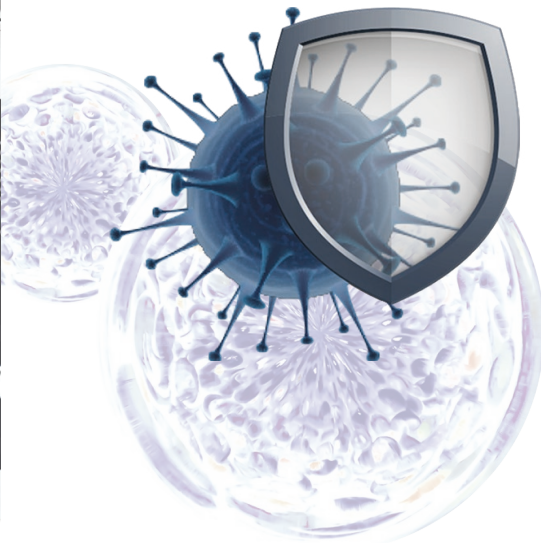
Poultry: 1000 gm per 2000 litres of drinking water for 5 - 7 days.

WITHDRAWAL TIME

Meat : 5 days



32



Powder Antibiotic

TAYLOFOS+

ANTIBIOTIC

EACH 1 gm CONTAINS:

Fosfomycin 250 mg Tylosin Tartrate 100 mg
Fructose 1.6 Diphosphate Tri-sodium 180 mg

INDICATIONS

TAYLOFOS+ is indicated for the treatment of bacterial infections caused by Gram-positive, Gram-negative bacteria and mycoplasma in the digestive and respiratory tract in poultry .

TAYLOFOS+ in poultry is indicated for the treatment of infections caused by E. Coli, Salmonella spp., Staphylococcus spp., Streptococcus spp. and in the treatment of infectious Coryza, Chronic Respiratory Disease (CRD), Avian cholera, Listeriosis, Pseudomonosis and diseases caused by fosfomycin and / or tylosin susceptible organisms.

DOSAGE

For oral administration via drinking water.

Poultry (broilers): Use AN amount of TAYLOFOS+ in 100 liters of drinking water during 3 – 5 days.

This is equivalent to 80 mg of fosfomycin per kg bodyweight.

Age in days	Grams of TAYLOFOS+
0 – 7	80
8 – 14	100
15 – 21	120
22 – 28	140
29 – 35	160
36 – 42	180

WITHDRAWAL TIME

Meat : 7 days



Powder Antibiotic



33

AMPRO-PLUS

ANTICOCCIDIAL

Each 1ml contains:

Amporlium as HCl 250mg
Ethopabate 16 mg
Vitamin K 125 mg

INDICATIONS

Indicated for coccidiosis caused by coccidia susceptible to amprolium (*Eimeria* spp.) or gastrointestinal infections for which it is therapeutically or prophylactically indicated to administer amprolium in calves, goats, sheep and poultry.

DOSAGE

Treatment :

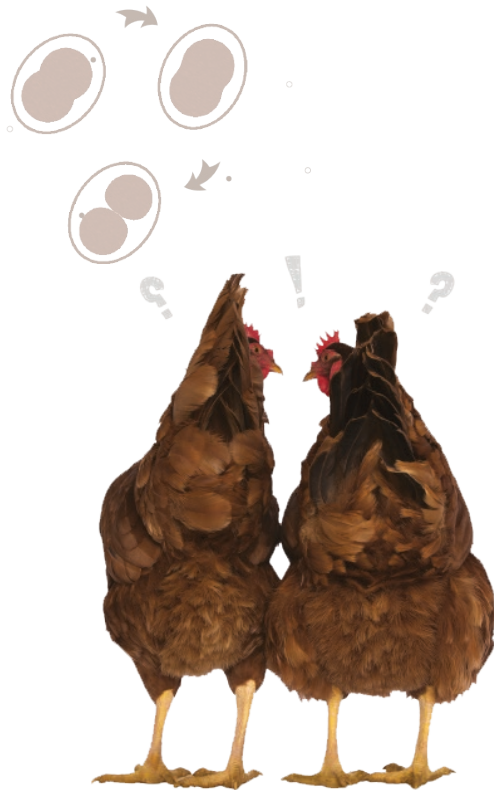
Poultry: 100/200 Litres of drinking water for 5-7 days or as advised by a veterinarian.

WITHDRAWAL TIME

For meat consumption: 3 days.



34



Liquid Anticoccidial

FABENDA

ANTI-PARASITIC

Active Ingredients

Albendazole 3.8%.

INDICATIONS

Treatment of verminous , teniasis and fasciolosis in sheep, is indicated for prophylaxis and treatment of worm infections in cattle, sheep and goats such as: Gastrointestinal worms : Bunostomum, Chabertia, Cooperia, Haemonchus, Nematodirus, Oesophagostomum, Ostertagia, Strongyloides and Trichostrongylus spp.
Lungworms : *D. viviparus* and *D. filaria*.
Tapeworms : *Moniezia* spp.
Liver fluke infestations : Mature *Fasciola hepatica*.

DOSAGE

Oral Administration.

For treatment against nematodes and cestodes: 1 ml every 10 kg bw .

For the treatment of inhibited *Ostertagia*: 2 ml every 10 kg bw.

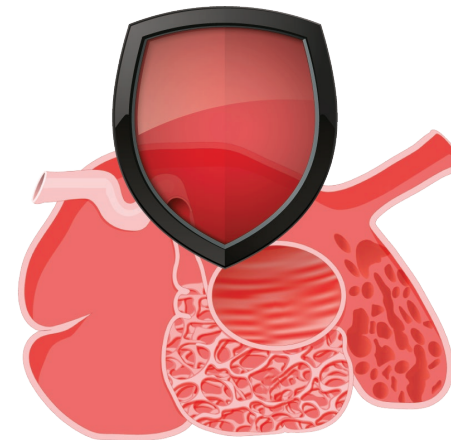
For the treatment against adult liver fluke: 2.6 ml every 10 kg bw.

Treatment duration: Single dose. Do not administer to females during the first 45 days of pregnancy.

WITHDRAWAL TIMES

- For meat : 12 days.

- For milk : 4 days.



Liquid Anti-Parasitic



35

COXICLEAR

ANTICOCCIDIAL

Each 1ml contains:

Diclazuril 10 mg
Toltrazuril 25 mg
Vitamin A 1000 I.U
Vitamin K 125 mg

INDICATIONS

For prevention and treatment of infections caused by coccidiosis of poultry. As an aid in the prevention of coccidiosis caused by Eimeria acervulina, E. brunetti, E. maxima, E. mitis, E. praecox, E. necatrix and E. tenella in broiler chickens and chickens reared for laying. As an aid in the prevention of coccidiosis caused by Eimeria adenoeides, E. meleagridis and E. gallopavonis in turkeys for fattening.

DOSAGE

For oral administration.

Poultry: 100 mL per 200 Litres of drinking water.

WITHDRAWAL TIME

Meat: 14 days

Eggs: 8 weeks



36



Liquid Anticoccidial

RESPITIC

HERBAL

Each 1ml contains:

Thyme Oil 10,000mg
Eucalyptus Oil 10,000mg
Menthol 10,000mg
Fennel Seeds Oil 10,000mg
Citrus 5,000mg
Camphor 10,000mg
Emulsifier 45,000mg

Respitic is a natural product, which combines the medical treatment of respiratory problems often caused by breathing system diseases, for broilers, layers, and breeders.

ADVANTAGES

It is a natural solution for feed instead of using antibiotics having many harmful side effects. It inhibites respiratory problems caused by breathing system diseases. It is anti-fungal. (A.niger, C.albicans), It makes drinking water healthier and it's quality higher. it stimulates endogenous enzymes in digestive system and works perfect altogether with other feed additives except for live bacteria and yeast culture. it gets ecological absorption in small intestine which promotes digestion of nutrients. It prevents physical stress and reduces the pressure on liver. it has no other bad effects upon useful micro-organism. it keeps stability of digestive track during mould period. it is anti-bacterial (E. coil, S. Typhimurium, S. aureus).

USE

treatment of respiratory problems caused by breathing system diseases, for broilers, layers, and breeders.

DOSAGE

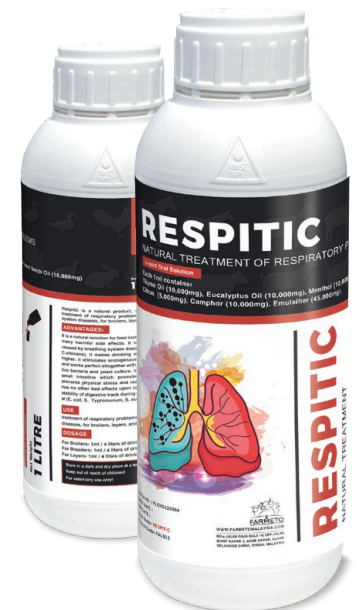
For Broilers: 1ml / 4 liters of drinking water for 3-4 days.

For Breeders: 1ml / 4 liters of drinking water for 3-4 days.

For Layers: 1ml / 4 liters of drinking water for 3-4 days.



Liquid Herbal



37

LEVA ZAN PLUS

ANTI-PARASITIC

Each 1 ml contains:

Levamisole hydrochloride 30 mg
Oxyclosanide 60 mg

INDICATIONS

LEVA-ZAN-PLUS is indicated for the treatment and control of Gastrointestinal and Pulmonary nematode infections and Chronic Fascioliasis in Cattle and Sheep. It removes mature and developing immature stages of a range of nematode species. It's effective against the following: In the abomasum: Haemonchus, Ostertagia (immature and adult) In sheep it is usually effective against inhibited / arrested larvae of Haemonchus, Ostertagia and Trichostrongylus axei. In the intestines: Trichostrongylus, Cooperia, Nematodirus, Oseophagostomum, Chabertia and Bunostomum spp.) In the lungs: Dictyocaulus spp. It removes practically all flukes (Fasciola spp.) present in the bile ducts of the liver.

DOSAGE

Administered orally via a drenching gun.
Sheep: 2.5 ml / 10 kg bodyweight.
Cattle: 25 ml / 100 kg bodyweight

WITHDRAWAL TIME

-Cattle and Sheep (Meat): 28 days
-Do not use in animals producing milk for human consumption.



38



Liquid Anti-Parasitic

LEVA 150

ANTI-PARASITIC

Each 1ml contains:

Levamisole Hydrochloride B.P. 100 mg
Benzyl Alcohol B.P. 1.5% w/v

INDICATIONS

Levamisole is a broad spectrum anthelmintic for use in the treatment and control of nematode infections in Cattle and Sheep. Lungworms: Dictyocaulus spp. Gastro-intestinal worms: Trichostrongylus spp., Oesophagostomum spp., Chabertia spp.

CONTRA-INDICATIONS

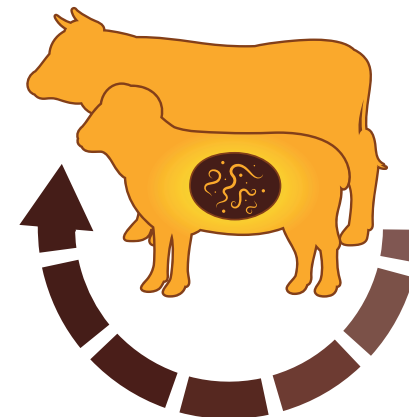
It is safe for use in cattle and Sheep at the recommended dosages. However, if the recommended dose rates are exceeded animals may exhibit signs of impaired motor function such as muscle tremors, head shaking and increased salivation which are of temporary nature. Although normally non-irritant, it may occasionally cause local reaction at the site of the injection. This should resolve naturally in a short period of time. Care should be taken to estimate accurately the bodyweight of animals to be treated before calculating the dosage. The product may be administered to pregnant or lactating animals but care should be taken when treating heavily pregnant animals or animals suffering stress from adverse weather conditions, poor nutrition, penning, handling, etc.

DOSAGE

General: 1 ml per 20 kg body weight.
Divide large dosage between two or more injection sites.

WITHDRAWAL TIME

Cattle: Meat: 28 days
Sheep: Meat: 15 days



Liquid Anti-Parasitic



39

WE PROVIDE
VETERINARY PRODUCTS
AS WATER SOLUBLE POWDER
TO ENHANCE ANIMALS HEALTH
AND CURE VARIOUS INFECTIONS.



VETERINARY PRODUCTS WERE PRODUCED IN
ACCORDANCE WITH GMP GUIDELINES
AND CONSIST OF MEDICINAL WATER-SOLUBLE
POWDERS.



VITA E + SE SUPPLEMENT

Each 1ml contains:

Vitamin E	100 mg
Sodium Selenite	5 mg

INDICATIONS

VITA E + SE is used for the prevention and treatment of diseases caused by Vit. E deficiency which does not respond to the treatment by Vit E alone due to Selenium deficiency which has the similar symptoms of Vit.E deficiency, in addition Selenium improves Immune response.

Poultry: Encephalomalacia (crazy chick disease), oedema, muscular dystrophy, testicular degeneration, also Vit. E is used to increase fertility, hatchability rate in breeder, egg production in layers, weight gain and to improve meat quality in broilers.

Cattle, Horses, Camels, Sheep, Goats, Pigs, Dogs & Cats:

-Muscular dystrophy, white muscle disease which leads to cardiac muscles dystrophy.

-Decreased fertility and oedema.

-Vit. E plays an important role as immuno-stimulant, so it is used during and after treatment of animals and poultry from bacterial, viral and parasitic diseases. Vit. E acts as antioxidant, so it is added to feed containing high percentage of fats to prevent rancidity and to protect fatty tissues from oxidation.

DOSAGE

Poultry: 250 - 500 ML / 1000 liter of drinking water for 3 - 5 days.

Lambs: 1 ml orally for 3-5 days.

Calfs-Sheeps: 2-4 ml orally for 3-5 days.

Cows-Camels: 8 ml orally for 3-5 days



Liquid Supplement

A100-D3E SUPPLEMENT

Each 1ml contains:

vitamin A acetate 100,000 IU
vitamin D3 25,000 IU
vitamin E acetate 100 mg

INDICATIONS

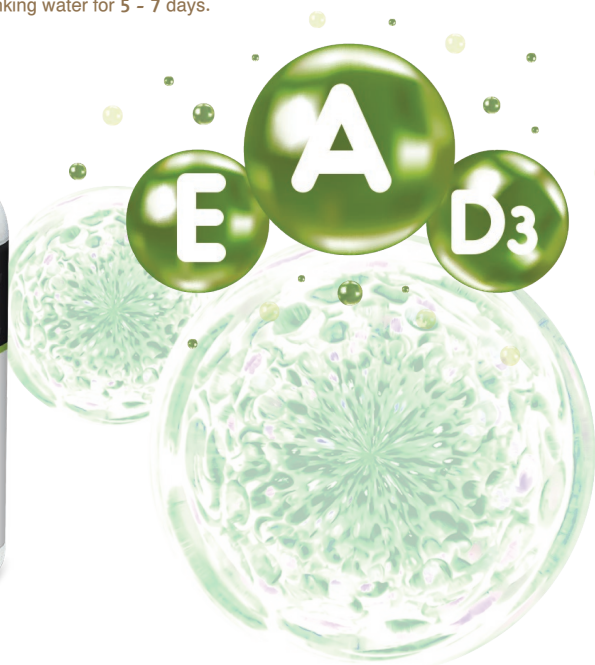
- Prevention or treatment of vitamin A, vitamin D3 and vitamin E deficiencies in farm animals.
- Prevention or treatment of stress (caused by vaccination, diseases, transport, high humidity, high temperatures or extreme temperature changes).
- Improvement of feed conversion.
- Improvement of egg production and hatchability. Prevention of stress and Strengthen of resistance to the diseases.
- Prevention of osteomalacia.
- Promotion of growth rates and Improvement of feed efficiency
- Helps in conditions of stress.

DOSAGE

Poultry: 1000 g per 2000 litres of drinking water for 5 - 7 days.



42



Liquid Supplement

Maxi-fort SUPPLEMENT

Each 1ml contains:

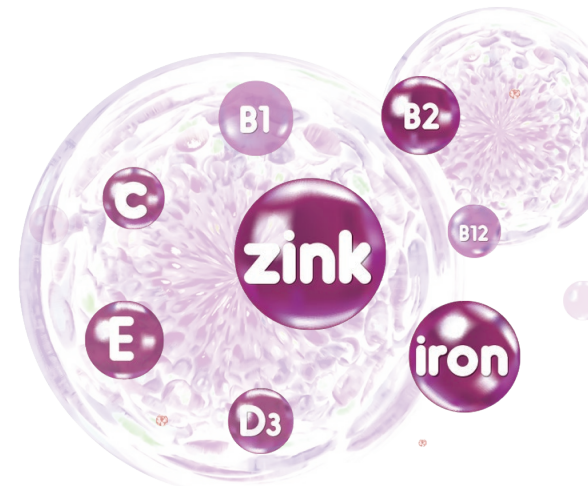
Vitamin A 20.000.000 I.U. , Vitamin D3 3.000.000 I.U. , Vitamin E 3.000 mg , Vitamin B1 50 mg , Vitamin B2 4 mg , Vitamin B6 500 mg , Vitamin B12 1 mcg ,Biotine 10 mg , Vitamin C 2.000 mg , Vitamin K3 10 mg , Magnesium (Sulphate) 5.000 mg , Manganese (Sulphate) 1.000 mg , Zinc (Sulphate) 5.000 mg , Iron (Sulphate) 1.000 mg , Cobalt (Sulphate) 100 mg , Potassium Iodite 100 mg , Sodium Selenite 25 mg , Calcium Pantothenate 100 mg , Nicotinic Acid 1.000 mg ,Choline Chloride 350 mg , Folic Acid 10 mg , Methionine 1.000 mg ,Lysine 1.000 mg ,Threonine 500 mg ,Valine 500 mg ,Tryptophane 500 mg ,Distillate water up to 1.000 ml.

INDICATIONS

- Cases of vitamins and minerals deficiency
- Cases of perosis (slipped tendon).
- Stress conditions due to vaccination, debeaking, transporting, rehousing, changes of feed and weather.
- Maintains good performance and increases the production.
- Improvement of feed conversion, productivity, the growth, fertility and hatchability rates, good feathering and flesh development.
- Enhancement of better rearing results.
- Helps in producing high eggs-quality, and bright, strong egg-shells.
- Increase of viability and resistance against diseases.
- Effective in cases of caged-layers fatigue.
- Prevention and treatment of fatty liver-kidney syndrome.

DOSAGE

Poultry: 50 - 100ml / 1000 L of drinking water for 3-5 days.
Cattle: 1 ml / 40 kg b.w. in drinking water for 5-7 days.
Horses: 4-6 ml / 100 kg b.w. in drinking water for 5-7 days.



Liquid Supplement



43

FANTOFIN-PLUS

SUPPLEMENT

Each 1L contains:

Menthol 200 g	Thymol 100 g
Eucalyptus oil 100 g	Camphor 100 g
Bromhexin 1 g	Diphenhydramine 1 g
Carbocisteine 1 gm	

INDICATIONS

FANTOFIN-PLUS is a unique combination of essential oils and chemicals that indicated in respiratory infections in poultry such as bronchitis in cases of bronchopneumonia in cattle and horses. FANTOFIN-PLUS acts by relaxes the smooth muscle, removes congestion, enhances the expectoration, dries the post nasal drip and increases the bronchial dilation.

Bromhexine decreases mucus viscosity by increasing lysosomal activity. This increased lysosomal activity enhances hydrolysis of acid mucopolysaccharide.

Diphenhydramine is an antihistamine used to treat sneezing, runny nose, and other symptoms of allergies and the common cold

Carbocisteine is a mucolytic that reduces the viscosity of sputum and so can be used to help relieve the symptoms of chronic obstructive pulmonary disorder

DOSAGE

Poultry: 1ml / 4L of drinking water for 3-5 days.
Cattle: 1ml / 40 kg b.w. in drinking water for 5-7 days.
Horses: 4-6 ml / 100 kg b.w. in drinking water for 5-7 days.



44

Liquid Supplement

CERQO-F

ANTI FUNGAL

Each 1L contains:

Propionic acid 200,000 mg
Lactic acid 150,000 mg
Acetic acid 125,000 mg
Citric acid 15,000 mg
Fosforic acid 10,000 mg
Formic acid 2,000 mg
Thepax(dry cell of saccharomyces cerevisiae) 10,000 mg

INDICATIONS

Effective control of Mycotoxins and Prophylaxis from their complication.

Prevention of secondary bacterial infection that following the Mycotoxicosis.

Effective protection of liver and Kidney from the effect of mycotoxins.

Increasing the performance of Digestive system "Digestion and absorption of Nutrients".

Activation of immune system helping to increase the immun response to vaccination Increasing productive performance" meat & eggs"

DOSAGE

Poultry: 1ml / 1L of drinking water for 3-5 consecutive days.



Liquid Anti Fungal



45

VITA C 99% SUPPLEMENT

Each 1 gm contains:
Vitamin C (ascorbic acid) 99% (990 mg)

INDICATIONS

- Vitamin C helps to increase resistance to stress conditions especially in cases of high temperatures.
- Improves feed conversion rate, hatchability, and infertility rates in animals.
- Enhances immune system function and thus increases animal immunity.

DOSAGE

Poultry: 1 gm per 10 Litres of drinking water or as advised by a veterinarian.

WITHDRAWAL PERIOD:

None.



FARZEX SUPPLEMENT

Each 1ml contains:

Ammonium Chloride 650 mg	Lysine HCL 75 mg
Methionine 65 mg	Betaine 50 mg
Vitamin C 5 mg	Magnesium Sulphate 10 mg
Zinc Sulphate 10 mg	Cholin 40 mg

INDICATIONS

- The balanced formula for dehydration and electrolytes losses.
- Improves animal growth rate.
- Increases animal performance.
- Increases immunity against stress conditions like heat stress.

PROPERTIES

FARZEX maintains optimal kidney health as it functions as a diuretic by removing metabolic waste and excess water and washes out toxins. It also maintains mineral balance in animals.

DOSAGE

Poultry: 500 ML per 1000 Litres of drinking water or as advised by a veterinarian



FARMOLIN SUPPLEMENT

Each 1ml contains:

Sorbitol 200 mg	L-Carnitine 50 mg
Betaine HCl 12 .5 mg	Choline chloride 75% 200 mg
D-Panthenol 25 mg	Magnesium sulphate 100 mg
DL-methionine 7 .5 mg	Vitamin C 0 .5 mg

INDICATIONS

farmolin is recommended as liquid nutritional supplement that will help to balance fat depositions. FARMOLIN can also support prevention of fatty liver conditions and liver dysfunctions. It will help correct digestive disturbances in animals that are fed a high energy diet that may lead to an increased supply of free fatty acids in the blood. It is also used to correct oxidative stress in different body tissues in various animal species.

DOSAGE

For oral administration via feed or drinking water.

Poultry : 500 ml per 2,000 litres of drinking water for 5 – 7 days.

Cattle, horses : 10 ml per 100 kg bodyweight for 5 – 7 days.

Sheep, goats, calves : 20 ml per 100 kg bodyweight for 5 – 7 days.

Mixed with feed, the product should be used immediately.

Medicated drinking water should be used within 24 hours.

In case of increased or lowered water intake adjust the medication concentrations accordingly.

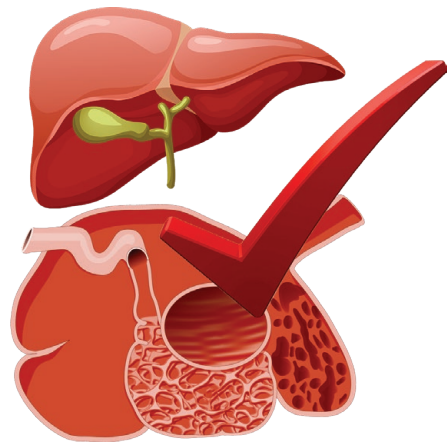
WITHDRAWAL PERIOD:

None.



48

Liquid Supplement



FA-GROW SUPPLEMENT

Each 1ml contains:

Yeast extract 80 mg	betaine 200mg
Methionine 120mg	lysine 80mg
Threonine 60mg	Citric acid 16 mg
Malic acid 3 mg	Phosphoric acid 13.6 mg
Copper sulphate 20 m	

INDICATIONS

FA-Grow recommended for the following mechanisms:

Antibacterial activity (acids).

Competition with undesirable organisms for space and or nutrients in the digestive tract.

Production of nutrients (vitamins) or other growth factors which stimulate growth and reproduction of other micro-organisms in the digestive tract.

Production and or stimulation of enzymes, Breakdown and or detoxication of undesirable compounds and Stimulation of the immune system in the host animal.

DOSAGE

For oral administration via drinking water.

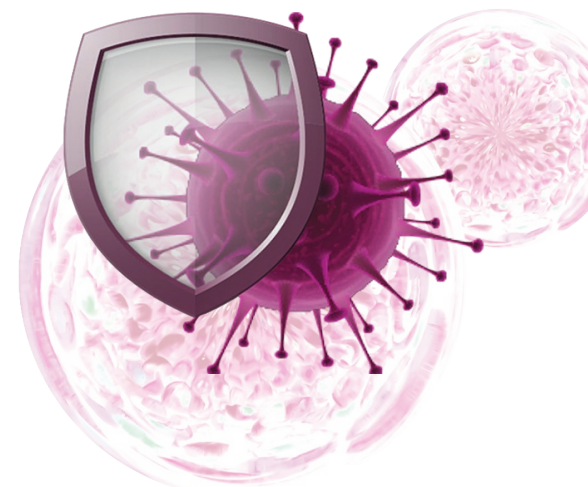
Poultry Prevention : 1 litre per 4,000 litres of drinking water.

Treatment : 1 litres per 1,000 litres of drinking water.

Medicated drinking water should be used within 24 hours.

WITHDRAWAL PERIOD:

None.



Liquid Supplement



49

B-COMPLEX + SUPPLEMENT

Each 1ml contains:

Vitamin B1, thiamine hydrochloride 35 mg.
 Vitamin B2, riboflavine sodium phosphate 0.5 mg.
 Vitamin B6, pyridoxine hydrochloride 7 mg.
 Nicotinamide 23 mg. Ascorbic acid 70 mg.
 Excipients ad 1 ml.

INDICATIONS

B-complex + is recommended as well balanced combination of essential B-vitamins for calves, cattle, goats, horses, sheep and swine.

B-complex+ is used for:

- Prevention or treatment of B-vitamin deficiencies in farm animals.
- Prevention or treatment of stress (caused by vaccination, diseases, transport, high humidity, high temperatures or extreme temperature changes), Improvement of feed conversion.

DOSAGE

For oral administration:

Calves, goats and sheep: 1 ml per 40 kg body weight for 3 - 5 days.

Cattle: 1 ml per 80 kg body weight for 3 - 5 days.

Poultry : 1 litre per 4000 litres of drinking water for 3 - 5 days.



50

WITHDRAWAL PERIOD

None.



Liquid Supplement

AD3E+CK SUPPLEMENT

Each 1ml contains:

Vitamin A 25 000 IU
 Vitamin D3 20 000 IU
 Vitamin E 10 mg
 Vitamin C 20 mg
 Vitamin K3 20 mg

INDICATIONS

Improving nutritional efficiency and profitability in animal production.

Building up the body's defenses and reinforcing its natural immunity.

Helping to efficiently control pathological processes.

Providing better growth to the animals without stress.

DOSAGE

For oral administration via drinking water.

Poultry : 1 litre per 2,000 litres of drinking water during 3 - 5 days.

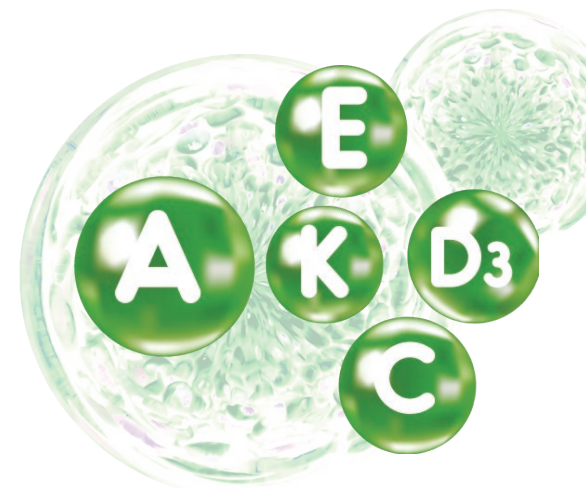
Horses, cattle : 5 - 10 ml per animal during 2 - 3 days.

Foals, calves : 5 ml per animal during 2 - 3 days.

Medicated drinking water should be used within 24 hours.

WITHDRAWAL PERIOD

None.



Liquid Supplement



51

PARAVIT SUPPLEMENT

Each 1 gm contains:

Paracetamol 180 mg
Vitamin C 120 mg

INDICATIONS

PARAVIT Indicated for reduces mortality and productivity losses in animals suffering from heat stress due to high ambient temperatures and a high relative humidity. Vitamin c prevents dehydration as it retains water in the mucosal cells of the gut wall, which reduces water loss in faeces and improves faecal consistency. Nutrient absorption is also improved. Vitamin C relieves symptoms and health problems associated with heat stress. Paracetamol for symptomatic treatment of fever in the context of respiratory diseases in combination with an appropriate anti-infective therapy.

DOSAGE

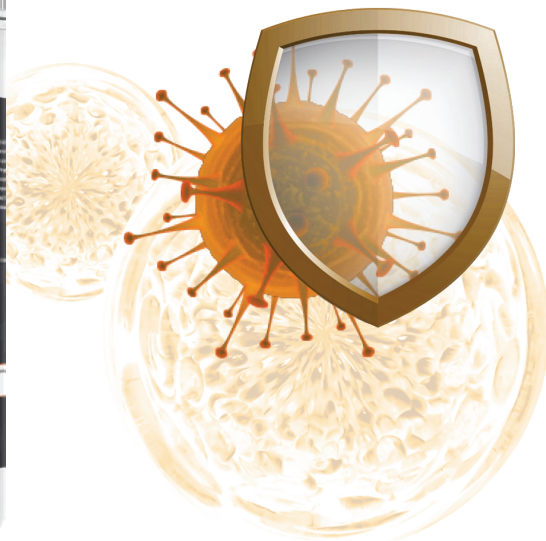
Poultry: 1000 g per 2000 litres of drinking water for 5 - 7 days.

WITHDRAWAL PERIOD:

None.



52



Powder Supplement

FIMMUN SUPPLEMENT

Each 1 gm contains:

ACTIVE INGREDIENT :

GARLIC EXTRACTS AND SACCAHAROMYCES CEREVISIAE (YEAST CULTURE)

INDICATIONS

FIMMUN Restricting and killing harmful germs. It is very nice for prohibiting and killing hazardous germs, such as E.coli, Salmonella sp., Staphylococcus aureus, and dysentery bacillus Detoxicate and keep healthy. It might decrease the toxin as mercury, cyanide and nitrite. The animal will be healthier with bright shiny fur and illness resistance improved, survival rate increased, after feeding for a long time.

Stimulating animal's appetite. The aromatic of garlic stimulates animal's cravings. The secretion of gastric juice and vermiculation of stomach and intestine can be improved. Therefore speed up the growth of the animal and heighten the feed reward.

Resisting moulds and pests. Various moulds can be erased and fly and maggot killed efficiently. Hygienic environment be kept and feed product kept longer.

It is a refill of antibiotic as well as the very best additive for producing annoyance complimentary fodder.

DOSAGE

For oral administration via mix with feed.

Poultry : 1000 gm per 2000 Kg of feed.or as advice by veterinarian.

Calves, cattle, goats, sheep, pigs : 50 gm per Kg of feed, twice daily, during 2 – 4 days.

WITHDRAWAL PERIOD:

None.



Powder Supplement



53

CETAVIT+ SUPPLEMENT

Each 1 gm contains:

Ascorbic acid (vitamin C) 250 mg	paracetamol 120 mg
Sodium chloride 30 mg	Calcium gluconate 20 mg
Potassium chloride 15 mg	Magnesium sulphate 30 mg
Dextrose up to 1 gm	

INDICATIONS

CETAVIT+ recommended for increases the resistance of poultry and livestock to stress conditions: vaccination, food changes, heat stress and dehydration and provides electrolytes which are lost during diarrhoea and fever. In hot weather to restore water and electrolyte balance during stress for protection against deaths for diarrhoea treatment to enhance the resistance to infections to improve iron intake and blood clotting when the feed is contaminated with mycotoxins during antibiotic treatment and recovery after illness to support prevention of coccidiosis .

DOSAGE

For oral administration via drinking water.

Poultry : 1000 gm per 2000 litres of drinking water.or as advice by veterinarian.

Calves, cattle, goats and sheep : 50 gm per Kg of feed, twice daily, during 2 – 4 days.

WITHDRAWAL PERIOD:

None.



54



Powder Supplement

FARMOLYT SUPPLEMENT

Each 1 gm contains :

Calcium chloride	5mg
Sodium chloride	80 mg
Potassium chloride	10 mg
Sodium citrate	50 mg
Dextrose	800 mg
Excipient q.s.	1 g

INDICATIONS

Symptomatic reduce symptoms of all kind of diarrhoea, weakness and dehydration.

DOSAGE

ADMINISTRATION ROUTE: Oral administration.

POSOLGY: In general, dissolve 15-30 g in 1l of drinking water or 50 g per kg of feed, and carry out the treatment for 1-7 days.

WITHDRAWAL PERIOD:

None.



Powder Supplement



55

FARMOLYT+ SUPPLEMENT

Each 1 gm contains:

Dextrose monohydrate 300 mg
Sodium chloride 100 mg
Glycine 50 mg
Sodium dihydrogen phosphate dihydrate 22 mg
Potassium chloride 13.5 mg
Sodium citrate 5 mg
Sodium propionate 50 mg

INDICATIONS

Recommended for prevention and treatment of dehydration caused by diarrhoea in calves, cattle, goats, poultry, and sheep.

Promotion of neuromuscular function by helping in transmission of nerve impulse. Regulate acid-base balance by maintaining the blood pH. Helps in dehydration, boost immunity and growth and acts as heat stress solution.

DOSAGE

For oral administration via drinking water.

Poultry : 1000 gm per 1000 litres of drinking water during 2 – 4 days.

Calves, cattle, goats, and sheep : 50 gm per litre of drinking water, twice daily, during 2 – 4 days.

Medicated drinking water should be used within 24 hours.

WITHDRAWAL PERIOD:

None.



56



Powder Supplement

FARMOTOX SUPPLEMENT

Each 1 gm contains :

Propionic acid 12 %
Ammonium propionate 12 %
Acetic acid 2 %
Precipitated silica 10 %

INDICATIONS

Recommended to Inhibit the growth of mould and fungi. Effectively bind toxin eliminates the effect of the poison and remove them from the body. Improve maintain pH of food and digestive tract. Also Interferes with action of aflatoxins. Prevents a variety of mycotoxicosis (caused by T2 toxin, zearalenone, aflatoxin and fumonisin B1). Prevents fungal infections. Pathogens in the diet and drinking water are reduced by the antimicrobial effect, which leads to an increased food intake. The lowering of the pH value creates an acidic environment in the stomach, whereby the digestive enzymes are activated, and the natural micro-flora is promoted.

DOSAGE

For oral administration

Poultry : 1000 gm per 1000 litres of drinking water during 2 – 4 days.

Calves, cattle, goats, sheep, pigs : 50 gm per litre of drinking water, twice daily, during 2 – 4 days.

Medicated drinking water should be used within 24 hours.

WITHDRAWAL PERIOD:

None.



Powder Supplement



57

HI IMMUNE SUPPLEMENT

Each 1L contains:

Vitamin E 250,000mg	Sorbitol 50,000mg
Selenium 150mg	Zinc 4,500mg
Choline Chloride 50,000mg	Biotin 100mg
Vitamin C 35,000mg	Emulsifier 200,000mg
Propylene Glycol 33,000mg	

DESCRIPTION

Vitamin E and Selenium are interrelated and function together as apart of the multi-component antioxidant defense system. Select HI IMMUNE as a powerful natural protector. Its primary function as tissue antioxidant prevents generations from harmful free radicals. Oxygen Metabolism in the body produces these toxic "free radicals". The antioxidant process converts the production of " free radicals" to harmless water. Vitamin e is the antioxidant agent but is closely tied to selenium. Selenium has a sparing effect of vitamin E by making it more efficient and helps in boosting instant immunity during the stress period at any stage.

INDICATIONS

- Deficiency of vitamin E in poultry and livestock, - low fertility and hatchability in poultry breeders, - Pathologies with nervous symptomatology, - Nutritional muscular dystrophy, - Metabolic disorders and toxicity, - Muscle degeneration.

DOSAGE

Poultry: 1000 g per 2000 litres of drinking water for 5 - 7 days.



Liquid Supplement

VITA C 25% SUPPLEMENT

Each 1 gm contains:

Vitamin C (ascorbic acid) 25% (250 mg)

INDICATIONS

- Vitamin C helps to increase resistance to stress conditions especially in cases of high temperatures.
- Improves feed conversion rate, hatchability, and infertility rates in animals.
- Enhances immune system function and thus increases animal immunity.

DOSAGE

Poultry: 1 gm per 10 Litres of drinking water or as advised by a veterinarian.

WITHDRAWAL PERIOD:

None.



Powder Supplement

IMMUNODEF+

SUPPLEMENT

Each 1 gm Contains:

Radix Phellodendri
 Radix Scutellariae
 (Yeast Peptide 7000 mg/kg)
 UDL. Is an extract from 5 natural plants

DESCRIPTION

Immunodef+ is a highly effective veterinary supplement that harnesses the power of natural plant extracts to promote optimal gut health and enhance immunity in animals. This carefully formulated blend, including Radix Phellodendri, Radix Scutellariae, and yeast peptide, works synergistically to support a healthy gut microflora, combatting harmful bacteria such as E. coli, Salmonella, and Clostridium. Additionally, it exhibits antiviral and antipyretic (anti-fever) properties, further bolstering the overall health of the host animal.

INDICATIONS

- Demonstrates strong activity against E. coli, promoting improved gut health and benefiting gut microflora.
- Effective against Salmonella, Clostridium, and other gram-negative bacteria.
- Enhances the host animal's immune response.
- Exhibits antiviral and antipyretic properties.

DOSAGE

For Broilers, Layers, and Breeders:
 Prevention: Add 150 grams to 1000 liters of water for 6 hours a day.
 Treatment: Add 200-300 grams to 1000 liters of water for 5 to 7 days.

WITHDRAWAL PERIOD

None.



IMMUNOLYSO

SUPPLEMENT

Each 1L contains:

Lysozyme 550 gm Vitamin C 55 gm
 Vitamin E 110 gm Olive oil 12 gm

DESCRIPTION

Immunolyso is a highly effective nutritional supplement that combines a well-balanced blend of vitamins and lysozyme, an antimicrobial enzyme. This unique formulation supports the overall well-being of animals and helps maintain optimal levels of micronutrients necessary for their healthy development. It is particularly beneficial for young, convalescent, weak, orphaned, or animals recovering from infectious diseases. The included plant extracts have a calming effect, improving the performance of farm animals.

INDICATIONS

- Improves the immune response.
- Prevents and treats stress caused by vaccination, diseases, transport, high humidity, high temperatures, or extreme temperature changes.
- Prevents or treats deficiencies of vitamins E or C in farm animals, including rickets, myoskeletal deformities, and decreased fertility in males.
- Supports convalescence.
- Enhances egg production and hatchability during pregnancy, lactation, or laying. It also aids in the development of fetuses and newborn animals.

ADMINISTRATION

Oral use in drinking water.
 Add 1 ml to 2 litres of drinking water for 3 to 5 days.

WITHDRAWAL PERIOD

None.



IMMUNOME+ SUPPLEMENT

Each 1L contains:

Nucleotide 25 gm	Garlic 120 gm
Lysozyme 250 gm	Vitamin E 25 gm
Omega 3 35 gm	Vitamin C 25 gm
Echinacea 60 gm	Zinc 6 gm

DESCRIPTION

Immunome+ is a well-balanced nutritional supplement that combines essential vitamins and lysozyme, an antimicrobial enzyme. It supports the overall well-being of animals and helps maintain optimal levels of micronutrients necessary for their healthy development. This supplement is particularly beneficial for young, convalescent, weak, orphaned, or animals recovering from infectious diseases.

The included plant extracts have a calming effect, improving the performance of farm animals.

INDICATIONS

- Enhances immune response.
- Prevents and treats stress caused by vaccination, diseases, transport, high humidity, high temperatures, or extreme temperature changes.
- Prevents or treats deficiencies of vitamins E or C in farm animals, including rickets, myoskeletal deformities, and decreased fertility in males.
- Supports convalescence.
- Promotes improved egg production and hatchability during pregnancy, lactation, or laying. It also aids in the development of fetuses and newborn animals.

DOSAGE AND ADMINISTRATION

Oral use in drinking water.

Add 1 ml to 2 liters of drinking water for 3 to 5 days.

WITHDRAWAL PERIOD

None.



IMMUNOVITAL-C SUPPLEMENT

Each 1 gm Contains:

Lysozyme 550 mg	Vitamin C 110 mg
Vitamin E 110 mg	Selenium 12 mg

INDICATIONS

- Naturally extracted from chicken egg albumen.
- Plays essential roles in the animal body, and their inclusion in the diet reduces stress and supports optimal growth in farm animals.

DOSAGE

In feed:

Broilers: Add 75-150 grams per ton of feed.

In drinking water:

1st week: Add 30 grams per 1000 broilers.

2nd week: Add 50 grams per 1000 broilers.

3rd week: Add 100 grams per 1000 broilers.

WITHDRAWAL PERIOD

None.



LIVROVITAL+ SUPPLEMENT

Each 1L contains:

Silymarin 7,000 mg	Propylene glycol 45,000 mg	Tartaric acid 12,000 mg
Mannan Oligosaccharide 3,000 mg	Beta-glucan 3,000 mg	L-aspartic acid 12,000 mg
Fructo Oligosaccharide 35,000 mg	Yeast Extract 55,000 mg	
L-Carnitine 85,000 mg	Lactic acid 55,000 mg	
Phosphoric acid 120,000 mg	Citric acid 60,000 mg	

DESCRIPTION

Livrovital+ is formulated to provide comprehensive liver protection and support. The key ingredients work synergistically to maintain liver health and enhance overall immunity. Silymarin helps stabilize liver cell membranes and protects against lipid peroxidation. Beta-glucan stimulates immune responses and activates key immune cells. Mannan Oligosaccharide prevents the colonization of harmful bacteria and neutralizes mycotoxins. Fructo Oligosaccharide promotes the secretion of mannose binding protein, reducing stress on the liver. Organic acids maintain gut health, improve nutrient utilization, and support optimal feed conversion ratio. Yeast Extract binds and detoxifies mycotoxins while promoting intestinal integrity and immune function.

INDICATIONS

- Adsorbs, inactivates, or neutralizes mycotoxins.
- Enhances immunity and antibody titers following vaccination.
- Improves feed conversion ratio (FCR).
- Supports increased production of meat and/or eggs.

DOSAGE AND ADMINISTRATION

Shake well before each use.

Poultry:

Add 1 ml to 2-4 liters of drinking water daily for 3-5 days.

During periods of stress:

Add 0.5-1.0 ml to 1 liter of drinking water daily for 3-5 days.

Or as directed by a registered veterinary physician.

WITHDRAWAL PERIOD

None.



RESPIMETO SUPPLEMENT

Each 1L contains:

Menthol 450,000 mg
Bromhexine HCl 220,000 mg

INDICATIONS

- Anti-inflammatory, antimicrobial, anti-stress, and antioxidant properties.
- Provides symptomatic relief against cough, sneezing, blocked nasal passages, and upper respiratory tract issues, reducing mortality.
- Facilitates nasal decongestion and clears larynx and pharynx for improved breathing.

DOSAGE

Administer for 3-5 days.

Poultry: Add 1 ml to 4 liters of drinking water.

Calves: Administer 1.5 ml per liter per day per head.

Sheep: Administer 1+5 ml per liter per day per head.

Cows: Administer 0.5 ml per liter per day per head.

WITHDRAWAL PERIOD

None.



RESPIRATOL+

SUPPLEMENT

Each 1L contains:

Peppermint Oil 75 gm	Echinacea 65 gm	Ginger Oil 55 gm
Eucalyptus Oil 55 gm	Vitamin A 55,000 I.U.	Propylene Glycol 110 gm
Cinnamon Oil 65 gm	Thyme Oil 45 gm	Riboflavin 6 gm

DESCRIPTION

Respiratol+ is a powerful veterinary supplement specially formulated to improve respiration and air passage in animals. This unique blend combines the benefits of peppermint oil, eucalyptus oil, cinnamon oil, echinacea, vitamin A, thyme oil, ginger oil, propylene glycol, and riboflavin. It effectively reduces mucus inflammation, aids bronchial inhalation, and enhances the animal's resistance to respiratory issues.

INDICATIONS

- Improves respiration and air passage by reducing mucus inflammation.
- Facilitates bronchial inhalation and enhances resistance to respiratory challenges.

DOSAGE

For 3-5 days.

Poultry: Add 1 ml to 4 liters of drinking water.

Calves: Administer 1.5 ml per liter per day per head.

Sheep: Administer 1.5 ml per liter per day per head.

Cows: Administer 0.5 ml per liter per day per head.

WITHDRAWAL PERIOD

None.



RESPIROMETO

SUPPLEMENT

Each 1L contains:

Ambroxol HCl 350,000 mg	Aminophylline 25,000 mg
Guaifenesin 30,000 mg	Menthol 35,000 mg
Eucalyptus Oil 12,000 mg	

INDICATIONS

- Supports respiratory health and function.
- Alleviates post-vaccination reactions.
- Enhances the efficacy of standard treatments against resistant pathogens.
- Demonstrated effectiveness in water and aerial disinfection.
- Promotes improved air quality.

DOSAGE AND ADMINISTRATION

- General Purpose:

Add 1 ml to 5 liters of drinking water twice a week.

- Respiratory Aid:

Add 1 ml to 5 liters of drinking water once daily for 2-3 days.

- Poultry:

For 100 birds:

Chicks: 25 ml per day.

Broilers: 60 ml per day.

Breeders: 120 ml per day.

WITHDRAWAL PERIOD

None



VITALMEGA SUPPLEMENT

Each 1L contains:

Sorbitol 400 gm	Vitamin B2 12 gm	DL-Methionine 45 gm	Magnesium Sulphate 110 gm
Silymarin 60 gm	Nicotinamide 25 gm	Choline Chloride 55 gm	Calcium Propionate 25 gm
Boldo/Artichoke 25 gm	Calcium Penthienate 12 gm	L-Threonine 35 gm	Formic acid 25 gm
Vitamin B1 25 gm	Lysine 55 gm	L-Carnitine 25 gm	Phosphoric acid 25 gm

DESCRIPTION

Vitalmega is a veterinary supplement formulated to prevent nutritional deficiencies and support the treatment of animals suffering from debilitating or deficiency conditions. It aids in antibiotic and chemotherapeutic drug treatments and aids in the convalescence of infectious diseases.

INDICATIONS

Vitalmega is specifically designed to support vital body functions and improve liver metabolism, detoxification, secretion, and productivity. It enhances liver function against toxic effects, chemical drugs, and various toxins. Vitalmega promotes rapid regeneration of liver tissues and cells, restoring liver functions and reducing the effects of mycotoxins.

DOSAGE AND ADMINISTRATION

Route of Administration: Oral

Poultry:

Add 100 ml to 4000 liters of drinking water or as advised by a veterinarian.

Calves, goats, and sheep:

Administer 5 ml twice daily per 100-200 kg body weight for 3-5 days.

WITHDRAWAL PERIOD

None.



WE PROVIDE
VETERINARY PRODUCTS
AS WATER SOLUBLE POWDER
TO ENHANCE ANIMALS HEALTH
AND CURE VARIOUS INFECTIONS.
VETERINARY PRODUCTS WERE PRODUCED IN
ACCORDANCE WITH GMP GUIDELINES
AND CONSIST OF MEDICINAL WATER-SOLUBLE
POWDERS.

3

FEED ADDITIVE



DCP 18%

FEED ADDITIVE

Each 1 gm contains :

- Phosphorus 18%
- Calcium 23%
- Fluoride 0.18%
- Heavy metal 30mg/kg
- Arsenic 20mg/kg
- Cadmium 10 mg/kg
- Mercury 0.1mg/kg

DICALCIUM PHOSPHATE ARE IMPORTANT MINERAL INGREDIENTS USED FOR ANIMAL FEEDING. COMPONENTS TO STIMULATE THE GROWTH OF CATTLE, SHEEP, POULTRY AND GOATS.

DESCRIPTION

Dicalcium phosphate containing 18.0% Minimum phosphorous and 23.0% Maximum calcium. The selected raw material of non-animal origin and the production process ensures an end product with good phosphorous digestibility and a content of undesirable elements well below that stipulated by EU feed legislation.

USE: Mixed with other ingredients in animal feeds, DCP is mainly designed for breeding purposes (cattle, poultry...). Used as the main source of Phosphorus and Calcium, DCP strengthens the skeleton and accelerates the animal's growth.

INDICATIONS

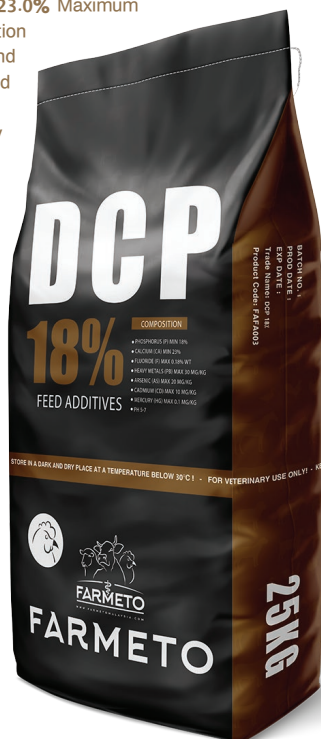
- Development of stronger animal bones
- Better function of the animal immune system
- Regulation of metabolism by feed phosphates
- Promote feed digestion
- Increase weight gain

APPLICATIONS/ USES

500GM / EACH 1 MT OF FINISH FEED, 1-3 WEEKS CONTINUOUSLY

STORAGE

Store in cool and dry environment.
Keep away from direct exposure to sunlight



DL-METHIONINE 99%

FEED ADDITIVE

Each 1 gm contains :

- DL- Methionine: 99.0%
- Moisture: Max 1%

DL-methionine is essential amino acid for the successful poultry production

DESCRIPTION

DL-Methionine is most important essential amino acid for the successful poultry production in order to provide aimed growth rate and also to get aimed economic benefit.

Essential amino acid used in animal feeds to meet the requirements of poultry and livestock in order to maximize production performance

DL-Methionine participates in synthesis of tissue proteins, vitamins, enzymes and hormones taking part in nitrogen, carbohydrate and fat metabolisms, and it is the important source of methyl groups for synthesis of all nucleic acids, as well as the sulfur source for sulfonic compounds.

INDICATIONS

DL-Methionin, one of essential amino acids and sulfur amino acids, is the first limiting amino acid in poultry, and probably also in high-yielding cows, and is the second or third limiting amino acid in pigs fed conventional diets.

Methionine is an essential amino acid for all animals, but they do not produce it themselves, meaning they have to get it from their feed. The methionine content of natural ingredients is generally low, so to meet the animals' requirements, additional methionine must be provided in their feed as a nutritional feed additive.

APPLICATIONS/ USES

Broilers: 1:1 or 1 kg / ton of feed.

Layers: 1:1 or 1 kg / ton of feed.

STORAGE:

Store in cool and dry environment.
Keep away from direct exposure to sunlight



L-LYSINE HCL 98.5% FEED ADDITIVE

Each 1 gm contains :

L-Lysine monohydrochloride 98.5 feed grade

L-Lysine is an essential amino acid required in the diets of poultry and most other animal species

DESCRIPTION

Lysine is an indispensable part of any feed formulation for pigs and poultry. It is amongst the top limiting amino acids for all monogastric species, including pigs, poultry, rabbits, pets and non-ruminating calves and other cloven-footed animals. L-Lysine is one of the most widely used amino acids. It is an essential amino acid required in the diets of swine, poultry and most other animal species. L-Lysine is frequently missing in most animal feeds. By adding it to the animal feed enables the animals to get a more balanced diet. L-Lysine forms an essential part in animals' diet. Inclusion of L-Lysine in the feed can help enhance the protein utilization and balance.

APPLICATION:

- 1). Increase the content of protein.
- 2). Improve milk yield of dairy.
- 3). Improve dry matter intake.
- 4). Improve conversion ratio of feed nitrogen.
- 5). Decreased the concentration of urea nitrogen in serum, milk, and urine.
- 6). Improve the daily gain and carcass quality of beef.
- 7). Improve milk quality by increasing protein and fat content.
- 8). Increase fertility rate and improve reproductive performance.

APPLICATIONS/ USES

Broilers: 1:1 or 1 kg / ton of feed.

Layers: 1:1 or 1 kg / ton of feed.



Feed Additive

MYCO STOP FEED ADDITIVE

Each 1 gm contains :

Propionic acid 12 %

Ammonium propionate 12 %

Acetic acid 2 %

Precipitated silica 10 %

A mould inhibitor for animal feeds with a preventive action.

DESCRIPTION

MYCO STOP is a mould inhibitor for animal feeds with a preventive action.

MYCO STOP is based on a combination of organic acids and their salts, which act in synergism, giving the best possible mold inhibiting performance, under the various pH, temperature and moisture conditions.

INDICATIONS

Toxins are effectively tied off and removed from the animal body.

- Inhibit the growth of mould and fungi
- Bind toxin eliminates the effect of the poison and remove them from the body
- Prevent food from clumping under the influence of toxins
- Maintain pH of food and digestive tract
- Interferes with action of aflatoxins
- Prevents a variety of mycotoxicosis (caused by T2 toxin, zearalenone, aflatoxin and fumonisin B1)
- Prevents fungal infections
- Increase feed conversion rate
- Prevents the development of primary and secondary infections
- Pathogens in the diet and drinking water are reduced by the anti-microbial effect, which leads to an increased food intake.
- The lowering of the pH value creates an acidic environment in the stomach, whereby the digestive enzymes are activated, and the natural micro-flora is promoted.
- The formation of digestive enzymes in the digestive tract and the natural intestinal flora is promoted, and thus improves the digestion.
- More solid excrements due to reduced diarrhea improve the air quality in the barns and reduce the effort for cleaning.

DOSAGE AND USE

It is recommended that 500 gm of MYCO STOP are incorporated in each ton of animal feed. This quantity can be increased up to 2 kg. per metric ton of feed if the atmospheric conditions to which the feed is exposed to are extreme.

STORAGE: Keep partially used bags tightly closed.



Feed Additive

CHOLINE CLORIDE 60%

FEED ADDITVE

Each 1 gm contains :

Choline Cloride 60%

Essential for perosis condition and liver enlargement in chicks

Acts as lipotropic agent and prevents the abnormal fatty infiltration in liver (fatty liver syndrome).

Ensure proper metabolism of the body & effective utilization or the nutrition.

Choline chloride increase growth rate, strengthen immunity and reducing fatty liver syndrome of the poultry.

DESCRIPTION

Choline, known as Vitamin B4, is a water soluble vitamins. It plays a significant role in nutrition, but its daily requirement seems to be hundreds of times greater than that of other vitamins.

Choline Chloride is the most common and the most economical source of choline for animal feed. Choline chloride is used in the feed increase growth rate, strengthen immunity and reducing fatty liver syndrome of the poultry.

INDICATIONS

Animal growth and feed performance

Building block for ceramides

Building block for lecithine

Building block for acetylcholine

- Building block of acetylcholine, which in this case has an important function in the transmission of stimuli in the nervous system (neurotransmitter).

- Building block of lecithin (phosphatidylcholine). Lecithin is one of the basic constituents of animal cell membranes.

- Building block of ceramides, which are present in the brain tissues. Interference in the enzymatic synthesis or degradation of these membrane building blocks results in metabolic disorders.

The supply of choline must be ensured by the formation of choline in the animal body and by addition to the feed. Choline is in equilibrium with other vitamins. Its synthesis is promoted by vitamin B12.

Recommended usage on basis of Choline Chloride 60% vegetable carrier (gram/mt feed)

Milk Cow Feeds (Rumen protected Choline)

APPLICATIONS/ USES

500gm / each 1 MT of finish feed, 1-3 weeks continuously

STORAGE:

Store in cool and dry environment.

Keep away from direct exposure to sunlight



Feed Additive

F-GARLIC-25

FEED ADDITVE

Each 1 gm contains :

ANTIBACTERIAL ALLICIN 25%

BENEFITS

to prohibit and kill the harmful germs such as e.coli, salmonel la spp, staphylococcus aureus and dysentery bacillus.

- stimulate and improve appetite of animal.

the fragrant of garlic can stimulate animal appetite. the secretion of gastric juice and vermiculation of stomach and intestine can be improved.

thus accelerate the growth of the animal and improve the feed utilization.

- detoxicate and keep healthy.

it can reduce the poisonous substance, such as mercury,cyanide and nitrite. the animal fur will be healthier bright shiny.

- enhance disease resistance and survival rate.

- resist mycete and insect. various mycete can be wiped out, the flies and maggots can be killed efficiently. sanitary environment and animal feed time can be kept longer.

improve the quality of meat, milk and eggs obviously.

these products taste more delicious.

- has special efficacy in rotten gills, red skin, enteritis, bleeding caused by various infections.

- reduce cholesterol. it can reduce the activity of 7acholesterol

hydroxyls, thus lower the cholesterol content in serum, yolk and liver.

- it is a refill of antibiotic, as well as the best additive for producing nuisance free fodder.

APPLICATIONS / USES

Broilers: 1:1 or 1 kg / ton of feed.

Layers: 1:1 or 1 kg / ton of feed.

STORAGE

Store in cool and dry environment.

Keep away from direct exposure to sunlight



Feed Additive

H-METHIONINE

FEED ADDITIVE

Each 1 gm contains :

H-METHIONINE : 99.0 %

Moisture: Max 1%

50% Substitute source of natural methionine

**A b-complex vitamin, a critical building block of nutrition and
An essential nutrient for optimal animal health.**

BENEFITS

Prevents fat accumulation and denaturation of liver and kidney as well as perosis.
Stimulates the animal or poultry's growth rate effectively for weight gain.
Helps to boost up the animals body's immunity function against diseases
Prominence effects on improving the quality and quantity of eggs and meat.

SPECIFICATIONS

Appearance Yellow-brownish powder
Identification Positive reaction
Content, % 60.0
Loss on Drying, % 4.0
Granularity 90% pass 800um mesh
Heavy metals (Pb), % 0.002

DOSAGE

Broilers: 1:1 or 1 Kg /1MT of feed.
Layers: 1:1 or 1 Kg /1MT of feed.



LINCO-4.4%

FEED ADDITIVE

Each KG contains :

Lincomycin Hydrochloride 44 gm

**HELPS TO INCREASE WEIGHT GAIN, IMPROVES FEED CONVERSION
RATE PLUS TREATS NECROTIC ENTERITIS IN ANIMALS.**

DESCRIPTION

Lincomycin is a lincosamide antibiotic that comes from the actinomycetes Streptomyces lincolnensis. It is a natural antibiotic produced by Streptomyces lincolnensis, active against the Gram-positive bacteria (especially on Staphylococcus spp., Streptococcus spp., Erysipelothrix rhusiopathie, Clostridium spp., Brahyospira spp.), Gram-negative bacteria (Lawsonia spp.) and Mycoplasma spp.

BENEFITS

- Increases weight gain.
- Improves feed conversion.
- Dries the wet dropping of poultry.
- Improves feed conversion rates (FCR).
- Controls and treats of necrotic enteritis.

DOSAGE

To increase rate of weight gain and improve feed efficiency: 25-50 gm of LINCO4.4 premix per 1000 Kg feed continuously.

For the purpose of treatment: 250-500 gm of LINCO4.4 premix per ton of feed.

Directions for mixing: To ensure an even dispersion in the feed, premix a small amount of LINCO4.4 into the feed prior to adding into the finished feed.



THERIONINE 98%

FEED ADDITIVE

Each 1 gm contains :

Threonine 98% Moisture: Max 2%

Threonine is the third limiting essential amino acid after methionine and lysine in corn-soybean based diets of broilers.

INDICATIONS

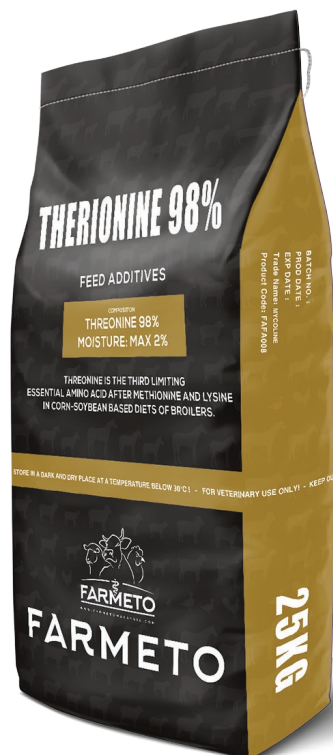
Threonine, it is clear that inclusion of dietary Threonine, enhances the growth performance and improves gut morphology, immunity and carcass characteristics in broilers. Threonine improves the efficiency of protein utilization in animal feeding. It increases the efficiency of animal protein production. It promotes the meat quality & increases the growth rate of Broiler. due to continuous improvement in genetic potential and management practices for poultry production, dietary Threonine requirements are changing.

BENEFITS

To prevent deficiency of THERIONINE .

DOSAGE

100-50 gm / 100 kg feed continue Or,
according to registered veterinary doctor or poultry consultant.



Feed Additive

MCP

FEED ADDITIVE

Each 1 gm contains :

Monocalcium Phosphate (Feed) Granular 22%

MCP Monocalcium Phosphate Animal Feed Additives use for supplement phosphorus and calcium.

DESCRIPTION

MCP is used for Animal Feed Additives to supplement phosphorus and calcium elements, also be used in aquatic animals feed, Higher water solubility of MCP is required in aquatic animals feed. Monocalcium Phosphate recommended as Poultry Feed Additives , cattle feed additives, and Chicken Feed additives.

BENEFITS

Monocalcium Phosphate helps strengthen animal bone structure and accelerate growth. Monocalcium Phosphate widely used as supplement of mineral nutrition in animal feed fodder. Monocalcium Phosphate can promote feed digestion, put on animal's weight, raise laying rate or producing milk rate, cure diseases such as rickets, osteomalacia and anaemia etc. Monocalcium Phosphate aids digestion, by increasing the activity of digestive enzymes, strengthens the immune system, It participates in the relocation of lipids, protein biosynthesis, and the cleansing of the intestine from harmful substances, It improves the efficiency of carbohydrate, protein, fat, mineral, and energy metabolism in the body, It has no negative effect on enzymes, amino acids, proteins and vitamins.

DOSAGE

for use: Orally, mixing with feed per (g / animal / day):

- Dairy cattle: 50.0 – 200.0
- Cattle during the dry period: 50.0 – 120.0
- calves: 40.0 – 80.0

500 mg / EACH 1 MT OF FINISH FEED, 1-3 WEEKS CONTINUOUSLY

STORAGE

Store in cool and dry environment.
Keep away from direct exposure to sunlight



Feed Additive

TOXBIND+

FEED ADDITIVE

Active Ingredients:

Yeast Cell Wall: 40%.

Aluminum Bentonite: 15%.

Magnesium Bentonite: 15%.

Sodium Bentonite: 20%.

Potassium Bentonite: 10%.

DESCRIPTION

ToxBind+ is a highly effective toxin binder specifically formulated for poultry farming. It is designed to prevent or reduce the harmful effects of toxins found in feed or the environment. This premium blend of ingredients, including yeast cell wall, aluminum bentonite, magnesium bentonite, sodium bentonite, and potassium bentonite, acts to bind and eliminate toxins, promoting optimal health and performance in poultry.

INSTRUCTIONS FOR USE

Unless advised otherwise by a veterinarian:

Thoroughly mix ToxBind+ with poultry feed at a recommended inclusion rate of 1 kilogram per tonne of feed.

Ensure uniform distribution of the toxin binder throughout the feed.

Provide the treated feed to poultry as their regular diet for the duration recommended by a veterinarian or poultry nutritionist.

WITHDRAWAL PERIOD

None.



FARMETOTM
VETERINARY MEDICINES

WWW.FARMETOMALAYSIA.COM

OUR INJECTABLES LINE
PROVIDE VETERINARY PRODUCTS
TO ENHANCE ANIMALS HEALTH
AND CURE VARIOUS INFECTIONS.

4
INJECTABLE



VETERINARY PRODUCTS WERE PRODUCED
IN ACCORDANCE WITH GMP GUIDELINES AND
CONSIST OF INJECTABLES.



WWW.FARMETOMALAYSIA.COM

PENSTREP 450 INJECTABLE

Each 1ml contains:

Procaine Penicillin 200 mg

Dihydrostreptomycin (as sulphate) 250 mg

INDICATIONS

Treatment and prevention of infections caused by bacteria sensitive to penicillin or dihydrostreptomycin, such as respiratory tract infections, urinary tract infections, infections at surgery, navel-ill and leptospirosis.

DOSAGE

Cattle and horses: 1 ml/25 kg body weight , dosage interval 24 hours for 3-5 days.

Sheep : 1 ml/20 kg body weight, dosage interval 24 hours for 3-5 days.

Dogs and cats : 1 ml/10 kg body weight , dosage interval 24 hours for 3-5 days.

ADMINISTRATION METHOD

by intramuscular or subcutaneous injection.

WITHDRAWAL TIME

Meat: 12 days.

Milk: 4 days.

In race-horses a withholding period of 5 days is recommended before the race.



PACKING: 100 ML FOR VETERINARY USE ONLY

INJECTABLE

OXY 30LA INJECTABLE

Each 1ml contains:
Oxytetracycline base 300 mg.
Excipients ad1 ml.

INDICATIONS

recommended to treat bacterial infections such as arthritis, gastrointestinal and respiratory infections caused by oxytetracycline sensitive microorganisms, like Bordetella, Campylobacter, Chlamydia, E. coli, Haemophilus, Mycoplasma, Pasteurella, Rickettsia, Salmonella, Staphylococcus and Streptococcus spp. in calves, cattle, goats, sheep and swine.

DOSAGE

Full-grown animals : 1 ml per 20-30 kg body weight.

Young animals : 2 ml per 20-30 kg body weight.

Do not administer more than 20 ml in cattle, more than 10 ml in swine and more than 5 ml in calves, goats and sheep per injection site.

ADMINISTRATION METHOD

by intramuscular injection.

WITHDRAWAL TIME

- For meat : 12 days.
- For milk : 5 days.



PACKING: 100 ML FOR VETERINARY USE ONLY

INJECTABLE

OXY 20LA INJECTABLE

Each 1ml contains:
Oxytetracycline 200mg
Excipients ad. 1 mL

INDICATIONS

For Sheep, Goats, Cattle, Buffaloes, Camels. Treatment of different cases: Shipping fever, Wooden Tongue (Actinobacillus), Pink eye (Bovine and ovine kerato conjunctivitis "Moraxella"), Dysgalactia, Foot rot, Calf diphtheria. Anaplasmosis (Theileriosis) and Heart water in cattle (Ehrlichia "Rickettsia"), Red water of calves (Leptospira). Enzootic abortion (Chlamydiosis) in sheep and goats.

Clostridial infections: Enterotoxaemia (Lamb dysentery, Black leg, Malignant oedema). Scours, enteritis, diarrhea. Septicaemia, Pyaemia, Peritonitis, Navel / Joint-ill, wounds and skin infections, abscesses. Supportive therapy in mastitis. Respiratory tract infections: Bronchitis, pneumonia, rhinitis, etc... Urinary tract infections: Nephritis, Pyelonephritis, Cystitis. Genital tract infections:

Metritis, Puerperal Sepsis, etc... Control of post-operative and post-parturient in

DOSAGE

Cattle, Buffaloes, Camels, Sheep, Goats: 1 ml per 10 kg B.wt. in one single dose.

In severe cases, repeat the injection dose after 3-5 days. Inject no more than (20 ml) in cattle, buffaloes, camels and no more than (5 ml) in sheep, goats, pigs to be given at the same site .

ADMINISTRATION METHOD

by intramuscular injection

WITHDRAWAL TIME

Meat: 28 days.

Milk: 4 days.



PACKING: 100 ML FOR VETERINARY USE ONLY

INJECTABLE

HEXSA-F INJECTABLE

Each 1ml contains:
Oxytetracycline 300 mg
Flunixin meglumine 20 mg

INDICATIONS

For the treatment of bacterial pneumonia associated with Pasteurella spp. and for the control of associated pyrexia in beef and non-lactating dairy cattle.

DESCRIPTION

HEXSA-F Injection an antibiotic, non-steroidal anti-inflammatory solution for the treatment of bacterial pneumonia associated with Pasteurella spp. and for the control of associated pyrexia in beef and non-lactating dairy cattle. Each ml contains 300 mg of oxytetracycline and 20 mg of flunixin.

DOSAGE & ADMINISTRATION

For deep intramuscular injection to cattle.

The recommended dosage is 1ml per 10kg bodyweight (equivalent to 30mg/kg oxytetracycline and 2mg/kg flunixin) on a single occasion. Maximum volume per injection site: 15ml. If concurrent treatment is administered, use a separate injection site.

ADMINISTRATION METHOD

by intramuscular injection

WITHDRAWAL TIME

Meat: 28 days.
Milk: 4 days.



PACKING: 100 ML FOR VETERINARY USE ONLY

INJECTABLE

GENTAPRIM INJECTABLE

Each 1ml contains:
Gentamycin Sulfate 50mg
Sulfadimethoxine 200mg
Trimethoprim 40mg

INDICATIONS

Infectious processes caused by germs sensitive to Gentamicin and Trimethoprim-Sulfonamide, including respiratory tract-infections, metritis, pielitis, pyelonephritis, cystitis, urethritis, pasteurellosis young animals diarrhea, mammitis. It is highly effective against E.coli and Salmonella infections. Prophylactic administration at day old has proven effective in preventing early chick mortality.

DOSAGE

Cattle, horses, Sheep, cats and dogs 1 ml / 10 Kg. BW for 3-5 days

ADMINISTRATION METHOD

by intramuscular injection

WITHDRAWAL TIME

Meat: 7 days.
Milk: 3 days.



PACKING: 100 ML FOR VETERINARY USE ONLY

INJECTABLE

GENTA10 INJECTABLE

Each 1ml contains:
Gentamicin (as sulphate) 100 mg
Excipients ad. 1 mL

INDICATIONS

Used in case of urogenital, respiratory, skin, tissue, uteru and gastrointestinal infections, caused by micro-organisms, susceptible to Gentamicin.

Horses, foals, cattle, calves, sheep, goats, dogs, and cats: Septicemia, Respiratory infections (Bronchitis, Pneumonia, Bronchopneumonia, Tonsillitis, Tracheitis), Gastro-intestinal infections (Coli-enteritis of calves, Enteritis, Gastritis, Peritonitis, Urinary tract Infections (Nephritis, Pyelitis, Pyelonephritis, Urethritis, Urocytitis), Arthritis, Polyarthritis, Meningitis, Mastitis, Metritis, Dermatitis of dogs.

DOSAGE

Horses, foals ,cattle,calves, sheep and goats: 1 ml per 25 kg bodyweight

Dogs and cats : 0.5 ml per 5 kg bodyweight

These dosages preferably to be given twice on the first day, and afterwards once daily.

ADMINISTRATION METHOD

by intramuscular injection

WITHDRAWAL TIME

Meat: 7 days.

Milk: 3 days.



PACKING: 100 ML FOR VETERINARY USE ONLY

INJECTABLE

FAMOX-15LA INJECTABLE

Each 1ml contains:
Amoxicillin (as Trihydrate) 150 mg

INDICATIONS

Amoxicillin as in vitro studies, it is effective against a wide range of Gram-positive and Gram-negative bacteria which include: Escherichia coli, Klebsiella pneumoniae, Proteus species, Salmonella species, Staphylococci and Streptococci.

FAMOX15-LAinj. is suitable for the control of infections, due to susceptible micro-organisms, in Cattle, Sheep, Dogs and Cats where a single injection giving prolonged activity is required. It may also protect from secondary bacterial invasion in cases where bacteria are not the initial cause of the disease.

Indications include infections of:

- Alimentary tract.
- Respiratory tract.
- Skin and soft tissue.
- Urogenital Tract.
- In the prevention of post-operative infection (treat before surgery).

DOSAGE

For intramuscular administration:

General: 1 ml per 10 kg body weight, repeatable if necessary after 48 hours.

Shake well before use and do not administer more than 20 ml in cattle

WITHDRAWAL TIME

Cattle (Meat): 23 days.

Sheep (Meat): 16 days.

Cattle (Milk): 79 hours (i.e. at the 7th milking).

Not for use in sheep producing milk for human consumption.



PACKING: 100 ML FOR VETERINARY USE ONLY

INJECTABLE

MAXIFORT-INJ INJECTABLE

Each 1ml contains:

Vitamin A (20,000 I.U.), Vitamin D3 (3,000 I.U.), Vitamin E (30 mg), Vitamin B1 (5 mg), Vitamin B2 (4 mg), Vitamin B6 (3 mg), Vitamin B12 1mcg), Manganese sulphate (0.2 mg), Zinc sulphate (0.3 mg), iron (sulphat) 0,5 mg Cobalt sulphate (0.4 mg), Potassium Iodite (0,01mg), Sodium selenite (0,025mg), Calcium Pantothenate (25 mg), Nicotinic Acid (15 mg), Choline Chloride (5 mg) Folic Acid (0.1 mg), Methionine (5 mg), Lysine (5 mg), Threonine (4 mg), Valine (3 mg), Tryptophane (3 mg).

INDICATIONS

For low body growth rates, reproduction disabilities, intestinal weaknesses, sight and vision issues, lack of strength of new born, weak immune system, inability to recover from diseases and infections and muscular weakness and excessive fatigue.

DOSAGE

Calves, cattle, goats and sheep: 0.5 mL per 10 Kg of body weight.

ADMINISTRATION METHOD

by intramuscular injection.

WITHDRAWAL TIME

Meat: 28 days

Milk: nil



PACKING: 100 ML FOR VETERINARY USE ONLY

INJECTABLE

OMEGA INJECTABLE

Each 1ml contains:

Vitamin A 100,000 IU

Vitamin D3 25,000IU

Vitamin E 100MG

Cod liver oil to 1ml

INDICATIONS

It is used in case of delay in growth, rachitism, osteomalacia, muscular dystrophy, epithelium and mucosa disorders, miscarriages, premature deliveries, sexual abnormalities, tetanus, and convalescence processes.

DOSAGE

- Cattle and Horses: 7 ml per animal.

- Calves and Foals: 1.5 – 2.5 ml per animal.

- Sheep and Goats: 1.5 – 2.5 ml per animal.

The treatment can be repeated after 7 days.

ADMINISTRATION METHOD

by intramuscular injection.

WITHDRAWAL TIME

None



PACKING: 100 ML FOR VETERINARY USE ONLY

INJECTABLE

IVOMIC 20

INJECTABLE

Each 1ml contains:
Ivermectin 20mg
Excipients ad. 1ml

INDICATIONS

For treatment and control of the followings: ENDOPARASITES: Gastro – intestinal nematodes (round worms): Heamonchus, Chabertia, Ostertagia, Nematodirus, Trichuris, Cooperia, Bunostomum, Strongyloides, Oesophagostomum, Trichostrongylus, Toxocara, Parafilaria, Hyostrongylus, Ascaris suum. Lung worms: Dictyocaulus, Protostrongylus, Metastrongylus. Sheep Nasal bots: (Oestrus ovis) larvae. ECTOPARASITES: Myiasis (Cattle grubs – warble-): Hypoderma bovis, H. Lineatum Myiasis (Tropical cattle grubs) : Dermatobia hominis. Myiasis (Screw worm fly): (Parasitic stage) Chrysoma bezziana. Mange mites: Sarcoptes, Psoroptes, Chorioptes. Sucking lice: Linognatus, Haematopinus, Solenoptes. Biting lice: Damalina. Ticks spp. Eye worms: Thelazia.

DOSAGE

Calves, cattle, goats and sheep: 1 mL per 100 Kg body weight.

ADMINISTRATION METHOD

For subcutaneous administration.

WITHDRAWAL TIME

Meat: 28 days
Milk : 21 days



PACKING: 100 ML FOR VETERINARY USE ONLY

INJECTABLE

IVOMIC 10

INJECTABLE

Each 1ml contains:
Ivermectin 10mg
Excipients ad. 1ml

INDICATIONS

For treatment and control of the followings: ENDOPARASITES: Gastro – intestinal nematodes (round worms): Heamonchus, Chabertia, Ostertagia, Nematodirus, Trichuris, Cooperia, Bunostomum, Strongyloides, Oesophagostomum, Trichostrongylus, Toxocara, Parafilaria, Hyostrongylus, Ascaris suum. Lung worms: Dictyocaulus, Protostrongylus, Metastrongylus. Sheep Nasal bots: (Oestrus ovis) larvae. ECTOPARASITES: Myiasis (Cattle grubs – warble-): Hypoderma bovis, H. Lineatum Myiasis (Tropical cattle grubs) : Dermatobia hominis. Myiasis (Screw worm fly): (Parasitic stage) Chrysoma bezziana. Mange mites: Sarcoptes, Psoroptes, Chorioptes. Sucking lice: Linognatus, Haematopinus, Solenoptes. Biting lice: Damalina. Ticks spp. Eye worms: Thelazia.

DOSAGE

Calves, cattle, goats and sheep: 1 mL per 50 Kg body weight.

ADMINISTRATION METHOD

For subcutaneous administration.

WITHDRAWAL TIME

Meat: 28 days
Milk : 21 days



PACKING: 100 ML FOR VETERINARY USE ONLY

INJECTABLE

FARMISIN INJECTABLE

Each 1ml contains:
Tylosin base 200 mg.
Excipients ad 1 ml.

INDICATIONS

FARMISIN is indicated for bacterial infections such as gastrointestinal and respiratory infections caused by tylosin sensitive micro-organisms, like Campylobacter, Mycoplasma, Pasteurella, Staphylococcus, Streptococcus and Treponema spp. in calves, cattle, goats, sheep and swine.

DOSAGE

General: 1 ml per 10 - 20 kg body weight for 3 - 5 days.

ADMINISTRATION METHOD

For intramuscular administration

WITHDRAWAL TIME

meat : 10 days.
milk : 3 days.



PACKING: 100 ML FOR VETERINARY USE ONLY

INJECTABLE

TILMI-300 INJECTABLE

Each 1ml contains:
Tilmicosin base 300 mg.
Excipients ad 1 ml.

INDICATIONS

TILMI-300 recommended for the treatment of respiratory infections in cattle and sheep associated with Mannheimia haemolytica, Pasteurella spp. and other tilmicosin-susceptible micro-organisms, and for the treatment of ovine mastitis associated with Staphylococcus aureus and Mycoplasma spp. Additional indications include the treatment of interdigital necrobacillosis in cattle (bovine pododermatitis, foul in the foot) and ovine footrot.

DOSAGE

Cattle – pneumonia : 1 ml per 30 kg body weight (10 mg/kg).

Cattle – interdigital necrobacillosis : 0.5 ml per 30 kg body weight (5 mg/kg).

Sheep – pneumonia and mastitis : 1 ml per 30 kg body weight (10 mg/kg).

Sheep – footrot : 0.5 ml per 30 kg body weight (5 mg/kg).

ADMINISTRATION METHOD

For subcutaneous injection.

WITHDRAWAL TIME

meat:

Cattle : 60 days.

Sheep : 42 days.

milk:

Sheep : 15 days.



PACKING: 100 ML FOR VETERINARY USE ONLY

INJECTABLE

FAMISOL

INJECTABLE

Each 1ml contains:
Levamisole base 100mg

INDICATIONS

FAMISOL is recommended for Prophylaxis and treatment of gastrointestinal and lungworm infections like: Calves, cattle, goats, sheep: Bunostomum, Chabertia, Cooperia, Dictyocaulus, Haemonchus, Nematodirus, Ostertagia, Protostrongylus and Trichostrongylus spp. Swine: Ascaris suum, Hyostrongylus rubidus, Metastrongylus elongatus, Oesophagostomum spp. and Trichuris suis.

FAMISOL use for calves, cattle, goats, sheep : Bunostomum, Chabertia, Cooperia, Dictyocaulus, Haemonchus, Nematodirus, Ostertagia, Protostrongylus and Trichostrongylus spp.

DOSAGE AND ADMINISTRATION

For intramuscular administration General: 1 ml per 20 kg body weight.

WITHDRAWAL TIME

Calves and cattle: 14 days. For milk: 4 days.



PACKING: 100 ML FOR VETERINARY USE ONLY

INJECTABLE

SULPHAPRIM-240

INJECTABLE

Each 1ml contains:
Sulphadiazine 200 mg
Trimethoprim 40 mg

INDICATIONS

SULPHAPRIM-240 recommended for the treatment of wide range of diseases of bacterial origin. Particularly effective in the infectious respiratory, urogenital and alimentary tracts. The combination of Sulfadiazine Sodium and Trimethoprim acts synergistic and usually bactericidal against many Gram-positive and Gram-negative bacteria like E. Coli, Haemophilus, Pasteurella, Salmonella, Staphylococcus and Streptococcus spp. Treatment of gastrointestinal, respiratory and urinary tract infections caused by Sulfadiazine sensitive bacteria in Livestock.

DOSAGE

Livestock: for one single dose, initial dose 1ml /10kg body weight, twice a day, continue for 2-3 days.

ADMINISTRATION METHOD

For intramuscular injection

WITHDRAWAL TIME

meat: 12 days

milk: 4 days



PACKING: 100 ML FOR VETERINARY USE ONLY

INJECTABLE

FABUVAQUE

INJECTABLE

Each 1ml contains:
Buparvaquone 50mg .

INDICATIONS

FABUVAQUE recommended for treatment of tick-transmitted theileriosis caused by the intracellular protozoan parasites *Theileria parva* (East Coast fever, Corridor disease, Zimbabwean theileriosis) and *T. annulata* (tropical theileriosis) in cattle. It is active against both the schizont and piroplasm stages of *Theileria* spp. and may be used during the incubation period of the disease, or when clinical signs are apparent.

DOSAGE

1 ml per 20 kg body weight

ADMINISTRATION METHOD

For intramuscular injection

WITHDRAWAL TIME

meat : 42 days.

milk : 2 days.



PACKING: 100 ML FOR VETERINARY USE ONLY

INJECTABLE

FIMI-70

INJECTABLE

Each 1ml contains:
Diminazene Aceturate 70mg
Antipyrine 37.5mg

DESCRIPTION

The active ingredient of product is Diminazene, drug is the diamidines family used as aceturate salt. Diminazene aceturate is highly active against bothe Trypanosomes and Babesia spp. It is also of value in the treatment of theileriosis in combination with antibiotics. It is especially useful for treatment of mixed protozoan infections , Antipyrine ensures a complete solubility of the Diminazene and acts as a support against inflammation and fever.

INDICATIONS

Diminazene aceturate is active against babesia, piroplasmosis and trypanosomiasis. Indications are as follows: prophylactics and treatment of babesia, piroplasmosis and trypanosomiasis in camel, cattle, cats, dogs, goats, horse, sheep and swine.

DOSAGE AND ADMINISTRATION

For intramuscular injection.

One dose, horse: 4ml~6ml per 100kg body weight, cattle, sheep: 4ml~7ml per 100kg body weight.

WITHDRAWAL TIME

Meat: 28 days Milk: 7 days



PACKING: 100 ML FOR VETERINARY USE ONLY

INJECTABLE

FARMOFLOX

INJECTABLE

Each 1ml contains:
Norfloxacin 20 mg

DESCRIPTION

Norfloxacin belongs to the group of fluoroquinolones and acts bactericidally against mainly Gram-negative bacteria like Campylobacter, E. coli, Haemophilus, Mycoplasma, Pasteurella and Salmonella spp.

INDICATION

FARMOFLOX recommended for bacterial infections such as gastrointestinal, respiratory and urinary tract infections caused by Norfloxacin sensitive micro-organisms like Campylobacter, E. coli, Haemophilus, Mycoplasma, Pasteurella and Salmonella spp.

As well as Treatment of susceptible bacteria from pigs and poultry and various infectious diseases caused by mycoplasma, such as avian colibacillosis, avian pasteurosis, chicken white peony, piglet jaundice and piglet white peony.

DOSAGE AND ADMINISTRATION

For intramuscular injection

Calves, goats, and sheep: 1ml. per 10kg. bodyweight for 3-5 days.

Cattle: 1ml. per 20kg. bodyweight for 3-5 days.

Swine: 1ml. per 10kg. bodyweight for 3-5 days.

Dog: 0.4ml per 1kg body weight, twice a day for 3 days

WITHDRAWAL TIME

None



PACKING: 100 ML FOR VETERINARY USE ONLY

INJECTABLE

VITALGEN-C

INJECTABLE

Each 1ml contains:
Vitamin C 100 mg
Analgen 300 mg

DESCRIPTION

The combination effective as an antipyretic, analgesic, anti-inflammatory and antispasmodic. Ascorbic acid has been found to be involved in a number of biochemical processes. Function of vitamin C is related to its reversible oxidation and reduction characteristics VITALGEN-C is a sterile solution contain Analgin (Dipyrone) in water for injection. Dipyrone (Analgin) is a pyrazoline derivative. It is a nonsteroidal anti-inflammatory drug.

INDICATIONS

VITALGEN-C recommended to use for the prevention and treatment of vitamin C deficiency. It is also used for adjuvant treatment of high fever, cardiogenic and septic shock, poisoning, drug eruption and anemia, as well as an antipyretic, pain relief, analgesic, anti-inflammatory and antispasmodic.

DOSAGE AND ADMINISTRATION

For intramuscular or intravenous injection

Horses: 10ml-30ml, cattle: 20ml-40ml.

Goats and swine: 2ml/5ml, dog: 0.2ml-1ml

WITHDRAWAL TIME

None



PACKING: 100 ML FOR VETERINARY USE ONLY

INJECTABLE

SPIRACOL INJECTABLE

Each 1ml contains:

Florfenicol 100mg Spiramycin 50mg
Prednisolone 5mg Lidocaine Hydrochloride 10mg

DESCRIPTION

The combination acts by inhibiting protein synthesis at the ribosomal level and is bacteriostatic, is a synthetic combination antibiotic acts against the most commonly isolated bacterial pathogens involved in bovine respiratory disease and against the bacterial pathogens in animals.

INDICATIONS

SPIRACOL recommended for Cattle, goats, sheep pneumonia especially pneumonia caused by pasteurella in cattle, bronchitis. Bacterial enteritis, diarrhea, pasteurellosis, salmonellosis. Dogs, cats: pneumonia, bronchitis, bacterial enteritis. Poultry: Chronic respiratory diseases (CRD), salmonellosis.

DOSAGE AND ADMINISTRATION

By intramuscular injection once daily for 3-5 days.
Cattle, camel, horse: 50-150mg/day.
Goats, sheep, swine: 10-20mg/day.
Dogs (7-14kg):2-5mg/day. Dogs (>14kg): 5-15mg/day.

WITHDRAWAL TIME

28 days



PACKING: 100 ML FOR VETERINARY USE ONLY

INJECTABLE

FARMDEX INJECTABLE

Each 1ml contains:

Dexamethasone (Sodium Phosphate) 2mg

DESCRIPTION

Dexamethasone is a glucocorticosteroid with a strong antiflogistic, anti allergic andgluconeogenetic action. It can be used as an anti-inflammatory and anti-allergic agent in cattle, pigs, goats, sheep, dogs and cats

INDICATIONS

It can be used as an anti-inflammatory and anti-allergic agent in cattle, pigs, goats, sheep, dogs and cats, and for the treatment of primary ketosis in cattle. The product can also be used to induce parturition in cattle. Dexamethasone is suitable for treatment ofn acetone anaemia, allergies, arthritis, bursitis, shock and tendovaginitis.

Glucocorticoid drugs. It has anti-inflammatory, anti-allergic effects and affects glucose metabolism. For inflammatory, allergic diseases, bovine ketone disease and sheep pregnancy toxemia. In addition, it can also be used for induction of labor in the same period of delivery.

DOSAGE AND ADMINISTRATION

By intravenous or intramuscular injection. One-day dose:
Horse: 1.25/2.5ml, cattle:2.5/10ml, sheep and swine: 2/6ml, dog and cat: 0.0625/0.5ml.

WITHDRAWAL TIME

Cattle, sheep, and pig: 21 days, Milk: 3 days



PACKING: 100 ML FOR VETERINARY USE ONLY

INJECTABLE

GEN-TAYLO

INJECTABLE

Each 1ml contains:

Gentamycin sulphate 100 mg

Tylosin (As Tartrate) 100 mg

Excipients ad. 1 mL

DESCRIPTION

The combination of tylosin and gentamicin acts synergistically against a wide range of infections caused by both Gram-positive (e.g. Staphylococcus, Streptococcus and Corynebacterium spp.) and Gram-negative (e.g. E.coli, Pasteurella, Salmonella and Pseudomonas spp.) bacteria in cattle and swine. Tylosin, a macrolide antibiotic, is active against particularly Gram-positive bacteria, some Spirochetes (including Leptospira) Actinomyces, Mycoplasmas, Haemophilus pertussis, Moraxella bovis and some Gram-negative cocci. Gentamicin binds to the 30S subunit of the ribosome of mainly Gram-negative bacteria, thereby interrupting protein synthesis. The combination antibiotic acts against the most commonly isolated bacterial pathogens involved in bovine respiratory disease and against the bacterial pathogens in animals.

INDICATIONS

Treatment of respiratory diseases: CRD, pneumonia, pleuropneumonia, pasteurellosis. Digestive diseases such as enteritis, gastritis, white-feces diarrhea, paratyphoid, genital disease, mastitis, and metritis.

DOSAGE AND ADMINISTRATION

Cows: 1 ml/20 – 25 kg of body weight. 3 – 5 days.

Goats, sheep: 1 ml/15 – 20 kg of body weight. 3 – 5 days.

WITHDRAWAL TIME

meat: 7 days.

milk: 3 days.



PACKING: 100 ML FOR VETERINARY USE ONLY

INJECTABLE

GENTAMOX

INJECTABLE

Each 1ml contains:

Gentamycin sulphate 82 mg (equivalent to gentamicin 50 mg)

Amoxicillin trihydrate 172.20 mg (equivalent to amoxicillin) 150 mg

INDICATIONS

sheep and goats: pneumonia, diarrhoea, bacterial enteritis, pasteurellosis and colibacillosis.
cattle: pneumonia, diarrhoea, bacterial enteritis, mastitis, metritis and cutaneous abscesses.
horses: pneumonia, diarrhoea, bacterial enteritis, genito-urinary infections, strangles, cutaneous abscesses and foot infections.

DOSAGE AND ADMINISTRATION

by intramuscular injection.

Sheep and Goats: 5 to 10 ml/adult animal/day, and 1 to 5 ml/young animal/day.

Cattle: 30 to 40 ml/adult animal/day, and 10 to 15 ml/calf/day.

Horses: 30 to 50 ml/adult animal/day, and 5 to 15 ml/foal/day.

WITHDRAWAL TIME

Meat: 30 days.

Milk: 2 days.



PACKING: 100 ML FOR VETERINARY USE ONLY

INJECTABLE

ENRO-F 100 INJECTABLE

Each 1ml contains:

Enrofloxacin 100 mg
Excipients ad. 1 mL

DESCRIPTION

Enrofloxacin belongs to the group of quinolones and acts bactericidal against mainly Gramnegative bacteria like Campylobacter, E. coli, Haemophilus, Pasteurella, Mycoplasma and Salmonella spp.

INDICATIONS

Enrofloxacin for gastrointestinal and respiratory infections caused by enrofloxacin sensitive micro-organisms, like Campylobacter, E. coli, Haemophilus, Mycoplasma, Pasteurella and Salmonella spp. in calves, cattle, sheep, goats and swine.

DOSAGE AND ADMINISTRATION

by intramuscular or subcutaneous injection.

Sheep, Goats, Cattle, Camels, Rabbits, Dogs & Cats: 0.25 ml per 10 kg B.wt. daily

WITHDRAWAL TIMES

- For meat: Calves, cattle, sheep and goats : 21 days. .
- For milk : 4 days.



PACKING: 100 ML FOR VETERINARY USE ONLY

INJECTABLE

CLOSA-F INJECTABLE

Each 1ml contains:

Closantel 100 mg
Benzyl Alcohol BP 2% v/v
Propylene Glycol BP q.

INDICATIONS

CLOSA-F is used for the control and treatment of internal parasites including adult and juvenile liver flukes (6-8 weeks), and external parasites.

CLOSA-F is indicated for the effective treatment and control of the following parasites-Gastrointestinal roundworms (adult and fourth-stage larvae), Ostertagia, O.Lyrata, Haemonchus Placei, Trichostrongylus Axei, T colubriformis, Cooperia, Oncophora C punctata, C Pectinata, Bunostomun Phlebotomum, Nematodirus Helvetianus(adult only), Naphthiger(adult only), Oesophagostomum Radiatum. Lungworms (adult and fourth-stage larvae): Dictyocaulus viviparus. Liver flukes (adult and juvenile)(6-8 weeks).Cattle Groub (parasitic stages):Hypoderma bovis, H lineatum. Sucking Lice: Linognathus vituli, Haematopinus Eurysternus,Solenopotes Capillatus. Mange Mites(cattle scab):Psoroptes Ovis, Sarcoptes Scabiei.

DOSAGE AND ADMINISTRATION

1 ml / 50 kg of bodyweight by Subcutaneous Injection only

For further info,consult a veterinarian.

WITHDRAWAL TIME

Meat:30 days



PACKING: 100 ML FOR VETERINARY USE ONLY

INJECTABLE



FARMETOTM
VETERINARY MEDICINES

WWW.FARMETOMALAYSIA.COM



WWW.FARMETOMALAYSIA.COM

NO.6 JALAN RAJA NALA 10, OFF JALAN BUKIT KAPAR 2, 42200 KAPAR, KLANG
SELANGOR DARUL EHSAN. MALAYSIA